

AIR NIPPER



AIR NIPPER

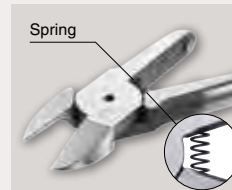
Environmental Measures

Pb (lead) / Cd (cadmium) / Hg (mercury) / Hexavalent chromium / PBB (polybrominated biphenyl) / PBDE (polybrominated diphenyl ether) / DEHP, BBP, DBP, DIBP (phthalate esters)

The products with this mark in this catalogue are compliant with the RoHS directives (EU) (usage limit of the above 10 substances).

Note: For the updated information on RoHS compliant products, visit our homepage, because some products or sizes are under investigation or are not compliant at the time of publication of this catalogue.
www.vessel.co.jp

RoHS



Standard blades

Blades open and close by a spring repulsion.

» 10



NM blades

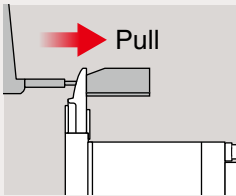
Special blade without spring for 24-hour operation; blades open and close by a magnet repulsion.

» 14



Slide-off air nippers

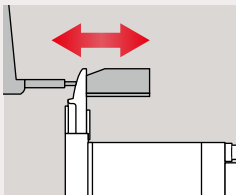
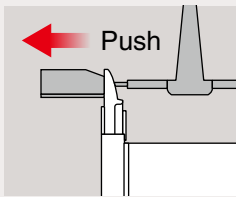
The main unit of the nipper slides and the blade comes into intimate contact with a gate, enabling to cut it without resin residue.



Pull/Push

A wide selection of models can support various applications. Possible to fix the highly precise positioning against the gate as there is less rattling or deflection.

» 2



Double action type

Slide mechanism not using a spring ensures smooth action. It is free from concerns about spring wear or metal fatigue, resulting in high durability.

» 3

Air nippers Model Blade shape

No. **NY10 A J**

- | | |
|---|---|
| AJ : Plastic, Straight | RAJ : Plastic, Straight Reversed |
| AJL : Plastic, Straight Long | RAJL : Plastic, Straight Long Reversed |
| AJT : Plastic, Straight Thin | |
| AE : Plastic, Nipping | |
| AJY : Plastic, Straight Recessed | |
| AD : Plastic, Over-ride | |
| AH : Plastic, Crank | RAH : Plastic, Crank Reversed |
| AJB : Plastic, Straight (Carbide tipped) | RAJB : Plastic, Straight (Carbide tipped) Reversed |
| AJV : Plastic, Straight V-shaped | |
| AJH : Plastic, Straight (HSS tipped) | |
| BJ : Metal, Straight | RBJ : Metal, Straight Reversed |



For more precise gate-cutting:



Heat air nippers

These nippers perform cutting by applying heat to the blade edges. They are good for cutting acrylic lens.

» 29



Heat air nippers Thrust-cut type

Cutting by the application of heat; thrust-cutting type ensuring a clean, unblemished cut surface constantly.

» 29



Option Parts

Bracket optional parts for easy installation. Clamps and brackets are available to facilitate mounting air nippers on equipment.

»31



Square type

Provided with threaded holes on the 5 faces of the main unit. Suitable for incorporating into a machine or equipment.

»7



Round type

Possible to adjust freely the mounting angle by a stand (option). Suitable for installation on a robotic arm or chuck plate.

»8



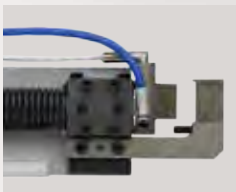
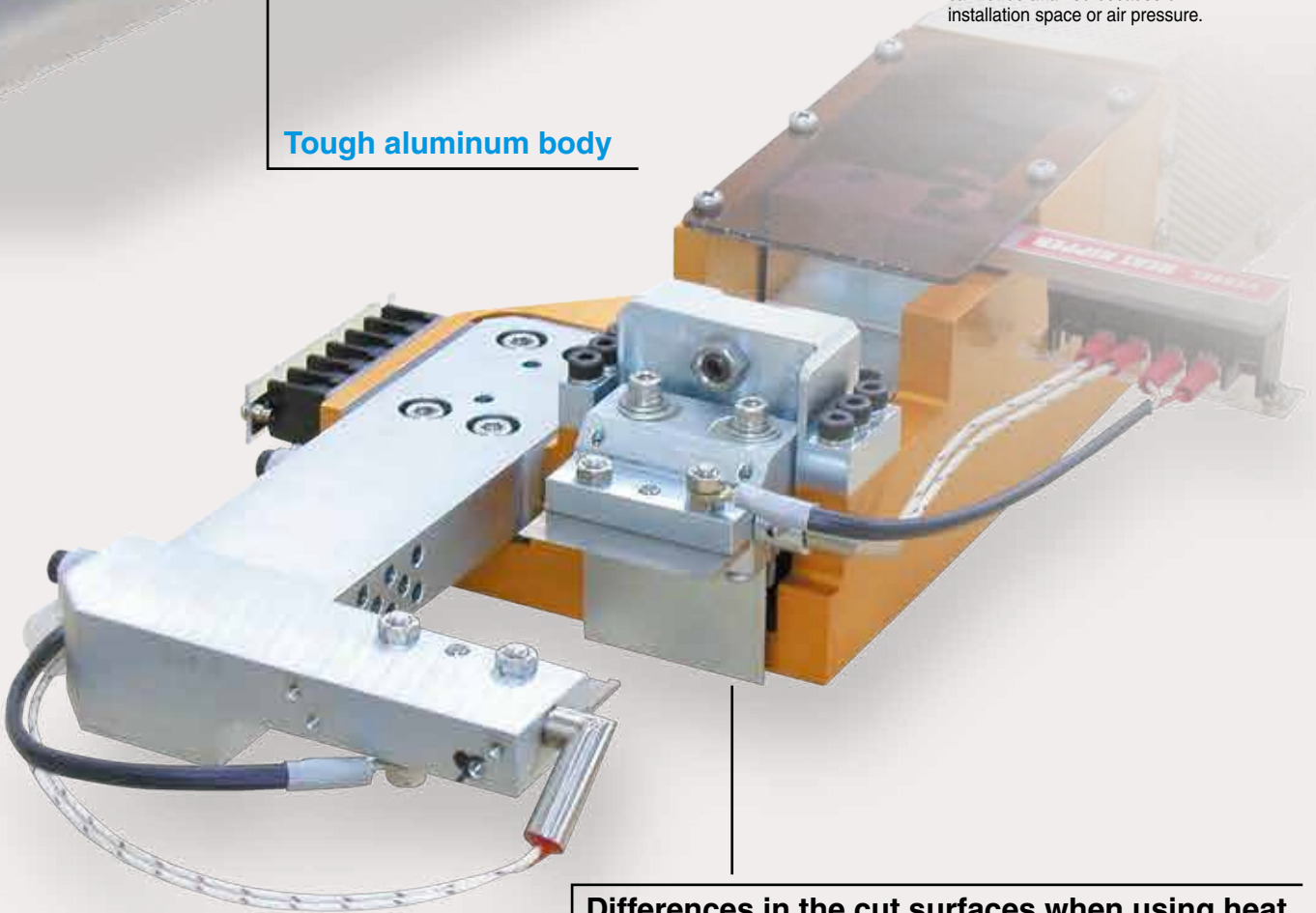
Extra Pressure Booster

Installing this unit on either square or round air nipper enables a pressure to be boosted. Ideal for applications where the radical pressure cannot be attained because of installation space or air pressure.

»9



Tough aluminum body



Air-hydro nippers Thrust-cut type

An air-hydro cylinder of air + oil provides low speeds and high power. These nippers are suitable for precision cutting in which gate projecting allowance is strict.

»27

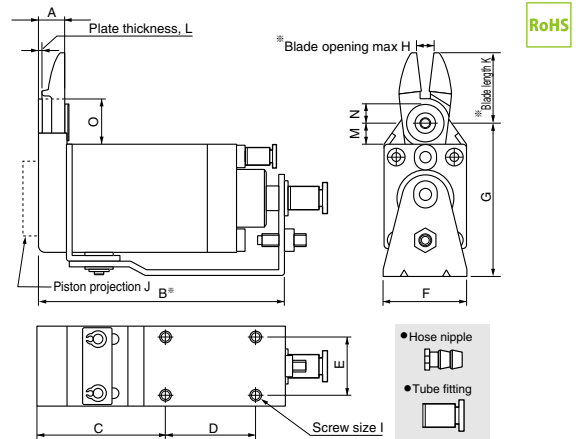
Differences in the cut surfaces when using heat nippers (GT-NSH type)

	PVC	Nylon	Glass-contained	Polypropylene
Standard Blades (Not Heat Nipper)				
Heat Nippers				

Sliding Air Nippers Horizontal-Type

GT-NY05/10/15/25

- The horizontal slide enables space to be utilized effectively.
- The low profile of the nipper body allows objects to be removed from the machine without obstructing the operations of the chuck plate.
- Blades are OPTION.



Reference

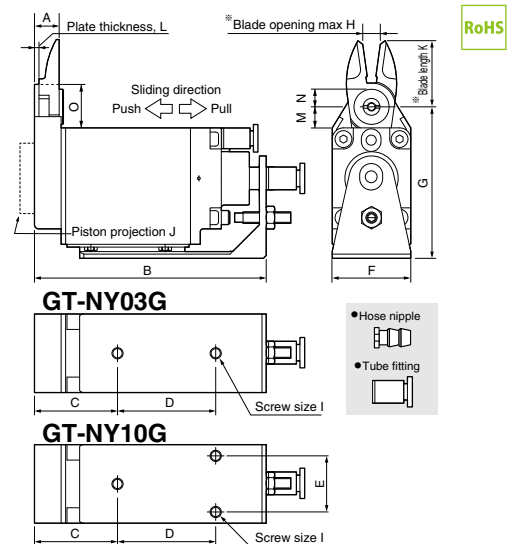
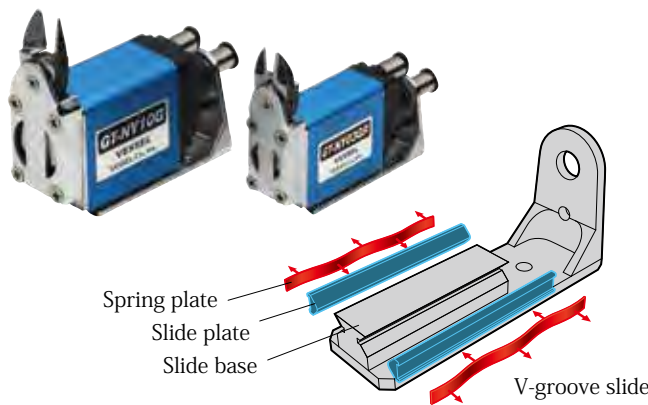
Capacity ϕ (mm)				Code No.	Model No.	Size(mm)															Air Consumption (cm ³ /str.)	Weight (g)	Slide Distance (mm)	Hose Port	JAN (4907587)
Soft Plastic	Hard Plastic	Copper	Steel			A	B	C	D	E	F	G	H	I	J	K	L	M	N	O					
3.0	2.0	1.6	1.0	360646	GT-NY05																		Pull 0~3	W/hose nipple	309518
3.0	2.0	1.6	1.0	360647	GT-NY05R																		Push 0~3	Hose I.D. ϕ 2.5mm	309532
3.0	2.0	1.6	1.0	360648	GT-NY05-4	8.6	75.9	40.9	25	15	23	47.6	4	M4	3	22	1.6	8.5	6.25	16.5	48	155	Pull 0~3	W/tube fitting	309525
3.0	2.0	1.6	1.0	360649	GT-NY05R-4																		Push 0~3	Hose I.D. ϕ 2.5xO.D. ϕ 4mm	309549
3.5	2.3	1.7	1.1	360652	GT-NY10																		Pull 0~3	W/hose nipple	309563
3.5	2.3	1.7	1.1	360656	GT-NY10R																		Push 0~3	Hose I.D. ϕ 2.5mm	309587
3.5	2.3	1.7	1.1	360660	GT-NY10-4	8.8	82.1	42.1	30	20	28	51.6	6	M4	5	24	1.6	7.5	6.25	15.5	68	210	Pull 0~3	W/tube fitting	309570
3.5	2.3	1.7	1.1	360664	GT-NY10R-4																		Push 0~3	Hose I.D. ϕ 2.5xO.D. ϕ 4mm	309594
4.0	2.6	1.8	1.2	360672	GT-NY15																		Pull 0~3	W/hose nipple	309617
4.0	2.6	1.8	1.2	360673	GT-NY15R																		Push 0~3	Hose I.D. ϕ 2.5mm	309631
4.0	2.6	1.8	1.2	360674	GT-NY15-4	10.2	93	48	35	25	33	58	8	M4	5	27	2	7.5	6.25	16.5	136	319	Pull 0~3	W/tube fitting	309624
4.0	2.6	1.8	1.2	360675	GT-NY15R-4																		Push 0~3	Hose I.D. ϕ 2.5xO.D. ϕ 4mm	309648
5.0	3.4	1.9	1.3	360680	GT-NY25																		Pull 0~5	W/hose nipple	309679
5.0	3.4	1.9	1.3	360681	GT-NY25R																		Push 0~5	Hose I.D. ϕ 4mm	309686
5.0	3.4	1.9	1.3	360682	GT-NY25-6	12.5	108.5	54.5	40	30	42	69	9	M5	2	31	2.5	10.5	7	20.5	184	580	Pull 0~5	W/tube fitting	309693
5.0	3.4	1.9	1.3	360683	GT-NY25R-6																		Push 0~5	Hose I.D. ϕ 4xO.D. ϕ 6mm	309709

※Capacity indication shows the reference value when a standard blade is mounted. Values vary depending on the blade shapes and type of cut objects.
 ※K (blade projection) and H (maximum blade opening) indicate the dimensions when a standard blade (AJ type) is mounted. ※Air Pressure: 0.4~0.5MPa (NY25 type: 0.5~0.6)
 ※B refers to the distance from the cut position for PUSH style models, and the distance from the start position for PULL style models.

Sliding Air Nippers Horizontal-Type

GT-NY03G/10G

- V-groove slide base ensures constant, stable positioning.
- The unit is not subject to inclined loads, and has achieved high precision gate cutting performance.
- Blades are OPTION.



Reference

Capacity ϕ (mm)				Code No.	Model No.	Size(mm)															Air Consumption (cm ³ /str.)	Weight (g)	Slide Distance (mm)	Hose Port	JAN (4907587)
Soft Plastic	Hard Plastic	Copper	Steel			A	B	C	D	E	F	G	H	I	J	K	L	M	N	O					
2.0	1.3	1.5	0.9	360741	GT-NY03G																		Pull 0~3	W/hose nipple	309419
2.0	1.3	1.5	0.9	360742	GT-NY03GR																		Push 0~3	Hose I.D. ϕ 2.5mm	309426
2.0	1.3	1.5	0.9	360743	GT-NY03G-4	8.6	74.5	29.5	30	-	19	46.5	3	M4	0	21	1.6	7.5	5.25	14.5	37	160	Pull 0~3	W/tube fitting	309433
2.0	1.3	1.5	0.9	360744	GT-NY03GR-4																		Push 0~3	Hose I.D. ϕ 2.5xO.D. ϕ 4mm	309440
3.5	2.3	1.7	1.1	360753	GT-NY10G																		Pull 0~3	W/hose nipple	309464
3.5	2.3	1.7	1.1	360754	GT-NY10GR																		Push 0~3	Hose I.D. ϕ 2.5mm	309471
3.5	2.3	1.7	1.1	360755	GT-NY10G-4	8.8	82.6	29.6	35	20	28	54	6	M4	5	24	1.6	7.5	6.25	15.5	68	275	Pull 0~3	W/tube fitting	309488
3.5	2.3	1.7	1.1	360756	GT-NY10GR-4																		Push 0~3	Hose I.D. ϕ 2.5xO.D. ϕ 4mm	309495

※Capacity indication shows the reference value when a standard blade is mounted. Values vary depending on the blade shapes and type of cut objects. ※K (blade projection) and H (maximum blade opening) indicate the dimensions when a standard blade (AJ type) is mounted. ※Air Pressure: 0.4~0.5MPa

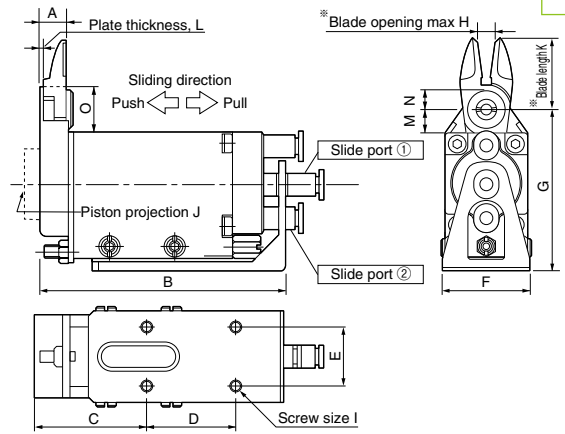
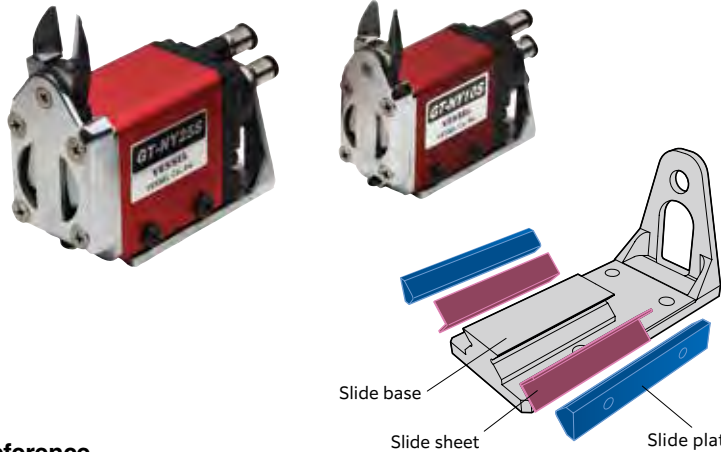
※Blades are option. Note that a forward or a backward-facing blades are respectively available.

Double Action Sliding Air Nippers

GT-NY10S/25S

RoHS

- The springless slide construction of the main unit ensures smooth movement.
- V-groove slide base has been employed for high precision positioning.
- Blades are OPTION.



<Note>
Nipper moves
- Backward [Pull direction] when air is fed to Slide port ①.
- Forward [Push direction] when air is fed to Slide port ②.

Reference

Capacity ϕ (mm)				Code No.	Model No.	Size(mm)															Air Consumption (cm ³ /str.)	Weight (g)	Slide Distance (mm)	Hose Port	JAN (4907587)
Soft Plastic	Hard Plastic	Copper	Steel			A	B	C	D	E	F	G	H	I	J	K	L	M	N	O					
3.5	2.3	1.7	1.1	360731	GT-NY10S	8.8	84.5	38	30	20	32	55	6	M4	5	24	1.6	7.5	6.25	15.5	68	300	0~3.5	W/tube fitting Hose I.D. $\phi 2.5 \times O.D. \phi 4mm$	309761
5.0	3.4	1.9	1.3	360732	GT-NY25S	12.5	106.5	47	40	30	47	72	9	M5	2	31	2.5	10.5	7	20.5	184	695	0~5.0	W/tube fitting Hose I.D. $\phi 4 \times O.D. \phi 6mm$	309860

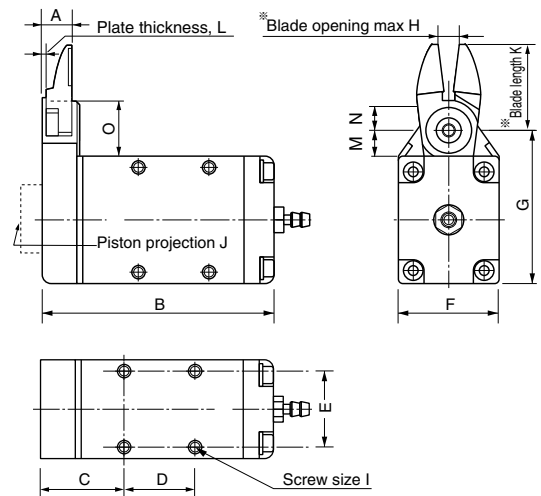
※Capacity indication shows the reference value when a standard blade is mounted. Values vary depending on the blade shapes and type of cut objects.
※K (blade projection) and H (Maximum blade opening) indicate the dimensions when a standard blade (AJ type) is mounted. ※Air Pressure: ·NY10S: 0.4~0.5MPa / NY25S: 0.5~0.6MPa

Type-F Air Nippers

GT-NF03/05/10/15/25

RoHS

- These compact, lightweight nippers have been designed for easy mounting inside equipment and to enable secure mounting under high-density mounting conditions.
- Blades are OPTION.



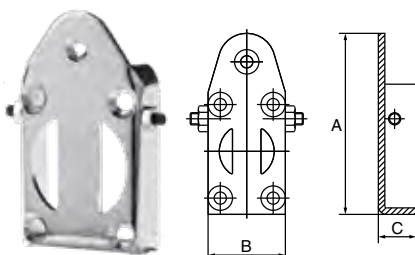
Reference

Capacity ϕ (mm)				Code No.	Model No.	Size (mm)															Air Consumption (cm ³ /str.)	Weight (g)	Hose Port	JAN (4907587)
Soft Plastic	Hard Plastic	Copper	Steel			A	B	C	D	E	F	G	H	I	J	K	L	M	N	O				
2.0	1.3	1.5	0.9	360605	GT-NF03	8.6	58.9	19.4	18	14	19	37.6	3	M3	0	21	1.6	6.4	5.25	13.4	37	85	W/hose nipple Hose I.D. $\phi 2.5 \times \phi 4mm$	035790
3.0	2.0	1.6	1.0	360606	GT-NF05	8.6	59.9	21.9	17	18	23	39.5	4	M3	3	22	1.6	8.4	6.25	16.4	43	101		308511
3.5	2.3	1.7	1.1	360607	GT-NF10	8.8	65.1	23.1	20	22	28	43.5	6	M3.5	5	24	1.6	7.4	6.25	15.4	63	143		308528
4.0	2.6	1.8	1.2	360608	GT-NF15	10.2	73	25	25	26	33	48.5	8	M4	5	27	2	7.4	6.25	16.4	128	219		308535
5.0	3.4	1.9	1.3	360609	GT-NF25	12.5	84	30.9	23	33.2	42	57.6	9	M5	2	31	2.5	10.4	7.0	20.4	184	378		I.D. $\phi 4 \times \phi 6mm$

※Capacity indication shows the reference value when a standard blade is mounted. Values vary depending on the blade shapes and type of cut objects.
※K (blade projection) and H (maximum blade opening) indicate the dimensions when a standard blade (AJ type) is mounted. Mounting screw for NF10(M3.5) is regarded as spare part.
※Air Pressure: 0.4~0.5MPa

Blade opening adjustment plate

NY03GWAS/05WAS/10WAS/15WAS/25WAS



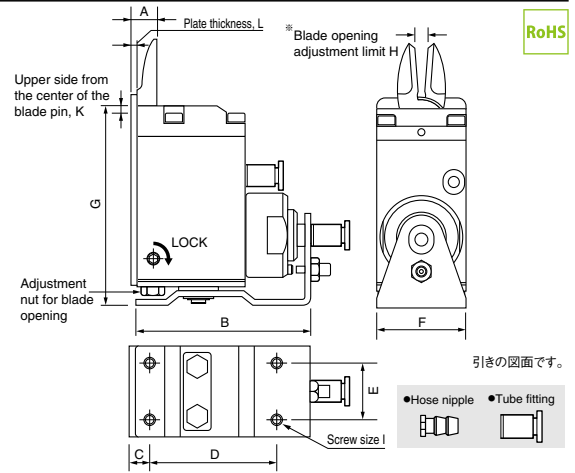
Code No.	Model No.	Size(mm)			Weight (g)	Applicable models	JAN (4907587)
		A	B	C			
855161	NY03GWAS	44.5	19	9.3	16	GT-NY03G(-4)/NY03GR(-4)/NF03	026347
855162	NY05WAS	47.5	23	9.3	19	GT-NY05(-4)/NY05R(-4)/NF05	026354
855163	NY10WAS	51.5	28	9.5	22	GT-NY10(-4)/NY10R(-4)/NY10S/NF10	026361
855164	NY15WAS	57.5	33	11.0	37	GT-NY15(-4)/NY15R(-4)/NF15	026378
855165	NY25WAS	67.5	42	13.5	70	GT-NY25(-6)/NY25R(-6)/NY25S/NF25	026385

※Blades are option. Note that a forward or a backward-facing blades are respectively available.

Sliding Air Nippers Vertical-type

GT-NT03/05/10/20

- Blade opening is adjustable, and fine adjustments are easy to make after mounting the nippers, ensuring clean, unblemished cut surfaces.
- Blade can be installed either with the cutting edge outside or inside.
- Blades are OPTION.



Reference

Capacity φ(mm)		Code No.	Model No.	Size(mm)											Air Consumption (cm ³ /str.)	Weight (g)	Slide Distance (mm)	Hose Port	JAN (4907587)
Soft Plastic	Hard Plastic			A	B	C	D	E	F	G	H	I	J	K					
1.5	1.0	360601	GT-NT03												27	178	Pull 0~3	W/hose nipple	309211
1.5	1.0	360611	GT-NT03R	9	62	7	43	14	19	68.1	1.5~3	M3	2	5	27	178	Push 0~3	Hose I.D φ2.5mm	309235
1.5	1.0	360621	GT-NT03-4												27	178	Pull 0~3	W/tube fitting	309228
1.5	1.0	360631	GT-NT03R-4												27	178	Push 0~3	Hose I.D φ2.5×O.D. φ4mm	309242
2.5	1.5	360602	GT-NT05												47	325	Pull 0~3	W/hose nipple	309266
2.5	1.5	360612	GT-NT05R	9	64	7	45	20	32	71.1	3~6	M4	2	5	47	325	Push 0~3	Hose I.D φ2.5mm	309280
2.5	1.5	360622	GT-NT05-4												47	325	Pull 0~3	W/tube fitting	309273
2.5	1.5	360632	GT-NT05R-4												47	325	Push 0~3	Hose I.D φ2.5×O.D. φ4mm	309297
3.5	2.3	360603	GT-NT10												82	515	Pull 0~3	W/hose nipple	309310
3.5	2.3	360613	GT-NT10R	11	73	8	53	24	38	88.1	4~7	M4	2	5	82	515	Push 0~3	Hose I.D φ2.5mm	309334
3.5	2.3	360623	GT-NT10-6												82	515	Pull 0~3	W/tube fitting	309327
3.5	2.3	360633	GT-NT10R-6												82	515	Push 0~3	Hose I.D φ4×O.D. φ6mm	309341
5.0	3.4	360604	GT-NT20												203	930	Pull 0~8	W/hose nipple	309365
5.0	3.4	360614	GT-NT20R	14	103	10	80	28	44	102.1	4.5~9	M5	2	6	203	930	Push 0~8	Hose I.D φ4mm	309389
5.0	3.4	360624	GT-NT20-6												203	930	Pull 0~8	W/tube fitting	309372
5.0	3.4	360634	GT-NT20R-6												203	930	Push 0~8	Hose I.D φ4×O.D. φ6mm	309396

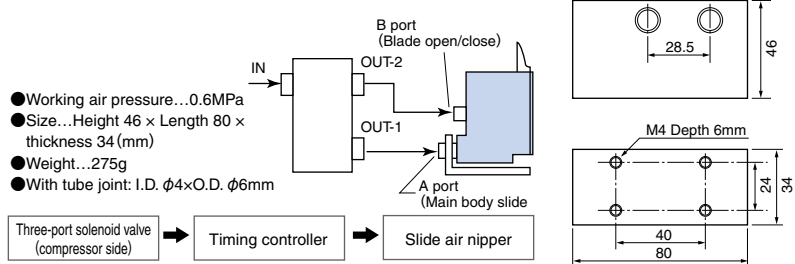
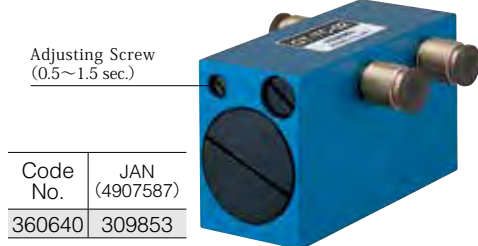
※Capacity indication shows the reference value when a standard blade is mounted. Values vary depending on the blade shapes and type of cut objects.
 ※Blade opening adjustment limit (H) is the dimension adjusted for standard blade (AJ type). ※Air Pressure: 0.4~0.5MPa (NT20 type: 0.5~0.6)

Related product

Timing Controller

GT-TC-02

- Enables to adjust the sliding (nippers) and cutting timing, by installing this controller between the compressor and the air nippers. (Approximately 0.5 seconds to 1.5 seconds)



Connectable nippers (Reference)

GT-	NY05	NY10	NY15	NY25	NT03	NT05	NT10	NT20	NB20	NB30	NB20LW	NB30LW
Connectable unit numbers	4	3	1	1	6	4	2	1	2	1	2	1

Sliding Air Nippers Bracket Type

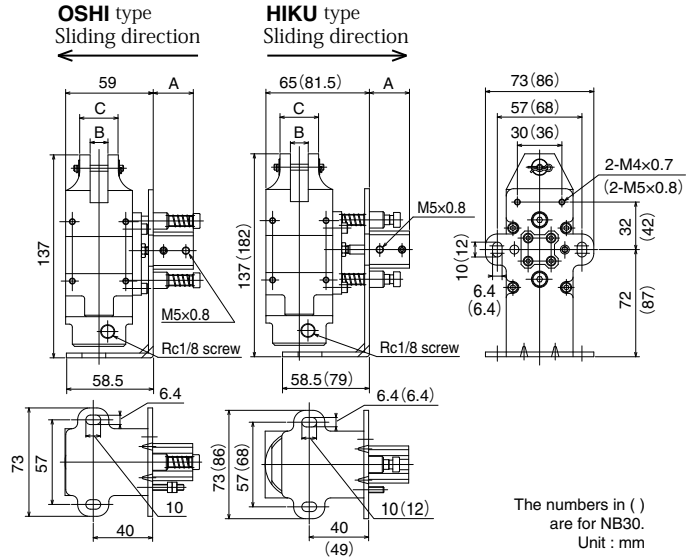
GT-NB20/30/20LW/30LW

- Smooth and continuous sliding even for large-diameter gate cutting, where a large impact is applied at the moment of cutting.
- Blades are OPTION.



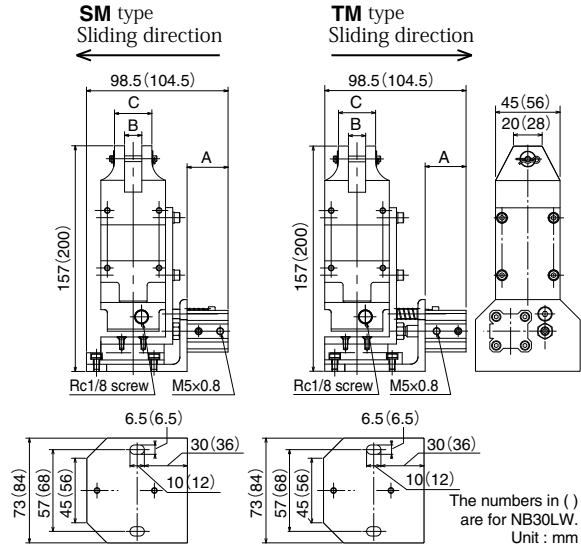
Reference GT-NB20

Code No.	Model No.	Dimensions(mm)			Slide Direction/Distance(mm)	Weight (g)	JAN (4907587)
		A	B	C			
360073	GT-NB20(5-OSHI)	22	12	26	Push 0~5	755	309013
360071	GT-NB20(5-HIKU)	22	12	26	Pull 0~5	755	309020
360074	GT-NB20(10-OSHI)	27	12	26	Push 0~10	755	309037
360072	GT-NB20(10-HIKU)	27	12	26	Pull 0~10	755	309044
360076	GT-NB30(10-HIKU)	28.5	17	36	Pull 0~10	1,420	309068



Reference GT-NB20LW-10TM Slide Mechanism High Precision Type

Code No.	Model No.	Dimensions(mm)			Slide Direction/Distance(mm)	Weight (g)	JAN (4907587)
		A	B	C			
360069	GT-NB20LW-10TM	28.5	12	26	Pull 0~10	795	309082
360068	GT-NB20LW-10SM	28.5	12	26	Push 0~10	795	309105
360077	GT-NB30LW-10TM	29.5	17	36	Pull 0~10	1,315	309099
360078	GT-NB30LW-10SM	29.5	17	36	Push 0~10	1,325	309051



W Sliding Air Nipper Bracket Type

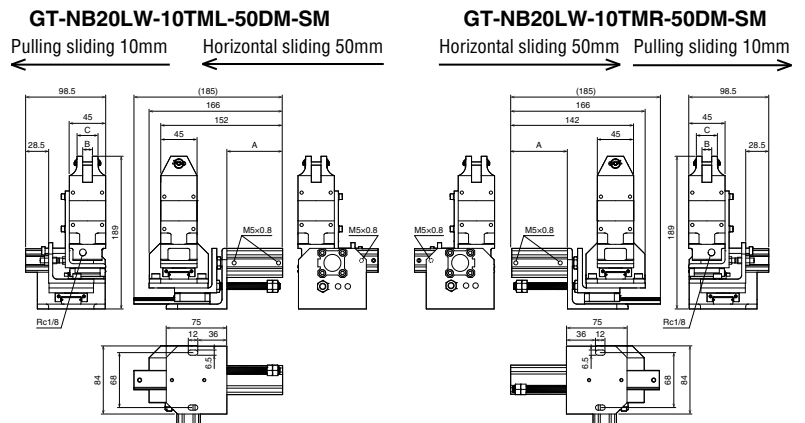
GT-NB20LW-10TML(TMR)-50DM-SM

- With a side opening blade for plastic mounted, this nipper can make itself insert to the place where ordinary nippers cannot reach, and move close to the gate to cut.
- Sliding direction moves up to 50mm in the horizontal direction and up to 10mm in the pulling direction.
- Blades are OPTION.



Reference GT-NB20LW-10TMR-50DM-SM

Code No.	Model No.	Dimensions(mm)			Sliding Direction / Distance(mm)	Weight (g)	JAN (4907587)
		A	B	C			
360066	GT-NB20LW-10TML-50DM-SM	69.5	12	26	Pulling sliding 0~10/Horizontal sliding 0~50	1,621	014665
360067	GT-NB20LW-10TMR-50DM-SM	69.5	12	26	Pulling sliding 0~10/Horizontal sliding 0~50	1,621	014672



ADV Series

Pressurized force is increased by 20%. Recommended to make equipment lighter and smaller.
 Compared to the existing model, the 20 type is about 20% more powerful. This has been realized by review of the internal structure and by the new design of the piston and the inside diameter.

Dimensions are same as the existing model.
 It is easy to replace the existing model with this new product. **Corresponding to the trend of hardening of the resin products and the larger diameter of the gate, without changing the current jig.**

The blade that you have for the exiting model can be used.
 The standard blades can be used as the replacement blade, as long as the nipper has the same capacity.

Note: Since the internal structure of this new nipper is different from the existing model, parts are not interchangeable between them. Also, some custom-made blades may not perform as sufficiently as intended.

Booster unit also available.

Dedicated option for the demand of more powerful cutting force. By attaching the booster to the ADV series, the pressurized force is even further increased by about 20%.

Scale is a convenient reference when using with a stand.
 The NR series has the scale that is convenient when using with a stand.

Recommended to the following cases:

- ▶ You want to make the nipper **as light as possible** without using a pressure booster unit.
- ▶ The cutting capacity of the current model (NR20, NS20, NR30, NS30) is **a little insufficient**.
- ▶ The upper capacity nipper type would be appropriate, but could not be used **due to space limitations**.
- ▶ The cutting capacity is sufficient, but **the air pressure needs to be lowered**.
- ▶ Applications that **require pressurization**, such as crimping, punching, bending, etc.

Air Nipper Square Type ADV

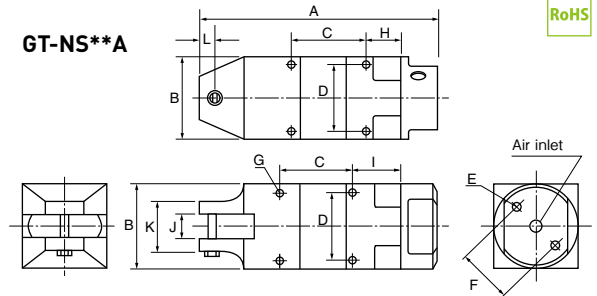
GT-NS20A/30A

- The nipper that has about 20% more pressurized force than the existing NS20 series and 50% more than the NS30.
- The air inlet position can be adjusted 180 degrees, so it can be changed freely according to the mounting position of the main unit.
- Blades are OPTION.



※The photo represents GT-NS30A.

GT-NS**A



RoHS

Reference

Capacityφ (mm)				Code No.	Model No.	Size(mm)										Air Consumption (cm ³ /str)	Air Pressure (MPa)	Weight (g)	Hose coupling	JAN (4907587)		
Soft Plastic	Hard Plastic	Copper	Steel			A	B	C	D	E	F	G	H	I	J						K	L
8.0	5.5	3.0	2.4	360029	GT-NS20A	129	45	40	36	M5 Depth12	30	M4 Depth7	19	24	12	26	9	262	0.4~0.6	366	Rc1/8	035165
11.0	7.0	4.5	3.0	360030	GT-NS30A	170	56	60	46	M6 Depth12	40	M5 Depth8	20	30	17	36	15	648	0.5~0.6	686	Rc1/8	035172

※The capacity is for reference only, when mounting a standard blade. Subject to the blade type and the material of the product to cut.
 ※Make sure in advance of the product dimensions for installation to dedicated or automated machine. (Frame outer dimension, screw size, distance between screws, etc.)
 ※Working air hose inner dia.: 5mm ※Overall length and Weight: Accessories not included.

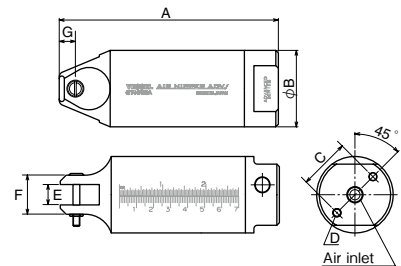
Air Nipper Round Type without Lever, ADV

GT-NR20A/30A

- The nipper that has about 20% more pressurized force than the existing NR20 series and 50% more than the NR30.
- The air inlet position can be adjusted 180 degrees, so it can be changed freely according to the mounting position of the main unit.
- Scale is on the lateral side.
- Blades are OPTION.



※The photo represents GT-NR30A.



RoHS

Reference

Capacityφ (mm)				Code No.	Model No.	Size(mm)							Air Consumption (cm ³ /str)	Air Pressure (MPa)	Weight (g)	Hose coupling	JAN (4907587)
Soft Plastic	Hard Plastic	Copper	Steel			A	B	C	D	E	F	G					
8.0	5.5	3.0	2.4	360027	GT-NR20A	129	45	30	M5 Depth12	12	23	9.5	262	0.4~0.6	269.5	Rc1/8	034700
11.0	7.0	4.5	3.0	360028	GT-NR30A	170	56	30	M6 Depth12	117	30	10.5	648	0.5~0.6	496.0	Rc1/8	035158

※The capacity is for reference only, when mounting a standard blade. Subject to the blade type and the material of the product to cut.
 ※Make sure in advance of the product dimensions for installation to dedicated or automated machine. (Frame outer dimension, screw size, distance between screws, etc.)
 ※Working air hose inner dia.: 5mm ※Overall length and Weight: Accessories not included. ※Use an optional stand (NR20ST, NR30ST) for installation in equipment.

Booster Unit ADV

P-20A/30A

- Booster unit dedicated to the ADV series.
- The booster unit that has about 20% more pressurized force than the existing P series.
- For the application that the originally expected pressurized force cannot be obtained because of the limit of the space and the air pressure.



※The photo represents P-30A.



RoHS

Reference

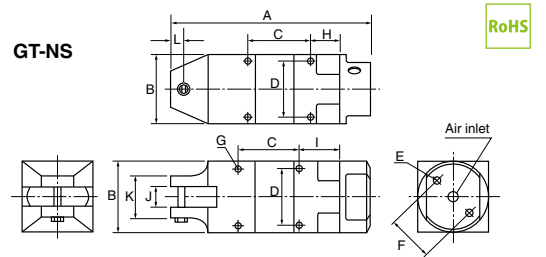
Capacityφ (mm)				Code No.	Model No.	Size(mm)		Air Consumption (cm ³ /str)	Air Pressure (MPa)	Weight (g)	Applicable Nippers (GT-)	JAN (4907587)
Soft Plastic	Hard Plastic	Copper	Steel			A	B					
9.0	6.5	3.4	2.6	360055	P-20A	87	45	538	~0.5	164	NS20A/NR20A	034717
14.0	8.0	5.5	4.5	360056	P-30A	92	56	744	~0.5	266	NS30A/NR30A	035189

※The capacity is for reference only, when mounting a standard blade. Subject to the blade type and the material of the product to cut. The total length and the weight will be the sum of the one of the nipper and the booster unit that is attached.
 ※Dedicated to the ADV series. Cannot be attached to the existing model (GT-NS/NR).

Square Air Nippers

GT-NS3/5/7/10L/20/30

- For gate cutting of resin molded products, automatic welding machines, wire coiling machines, and various other types of wire cutting. A wide variety of blades are available.
- Blades are OPTION.



RoHS

- The position of air intake port is 180-degree rotatable.
- Two air intake ports are provided, so they can be switched depending on the mounting place.

Reference

Capacity φ(mm)				Code No.	Model No.	Size(mm)										Air Consumption (cm ³ /str.)	Air Pressure (MPa)	Weight (g)	Hose coupling	JAN (4907587)		
Soft Plastic	Hard Plastic	Copper	Steel			A	B	C	D	E	F	G	H	I	J						K	L
2.0		1.0	0.5	360012	GT-NS3	110	23	40	19	M3 Depth8	17	M3 Depth3.5	19	24	7	23	7	45	0.4~0.5	95	Rc 1/8	308115
2.0		1.0	0.5	360013	GT-NS5	94	30	30	24	M4 Depth10	20	M3 Depth5	14	19	7	23	7	64	0.4~0.5	135		308122
3.0	2.0	1.6	1.0	360014	GT-NS7	113	36	30	28	M4 Depth10	24	M4 Depth5.5	18	23	9	23	7	116	0.4~0.5	215		308139
4.0	2.6	1.8	1.2	360009	GT-NS10L	113	36	30	28	M4 Depth10	24	M4 Depth5.5	18	23	12	26	7	116	0.5~0.6	215		308146
7.0	5.0	2.6	2.0	360010	GT-NS20	129	45	40	36	M5 Depth12	30	M4 Depth7	19	24	12	26	9	230	0.5~0.6	370		308153
10.0	6.5	3.3	2.8	360011	GT-NS30	170	56	60	46	M6 Depth12	40	M5 Depth10	20	30	17	36	15	584	0.5~0.6	685		308160

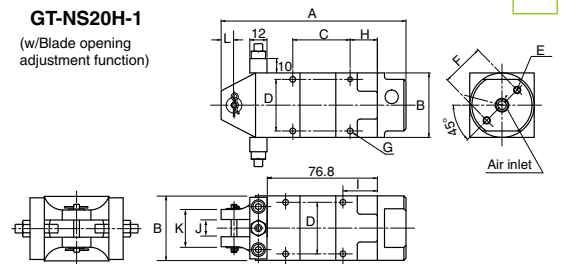
※The capacity is for reference only when mounting a standard blade. Subject to the blade type and the material of the product to cut.
 ※Working air hose inner dia.: 5mm
 ※Overall length and Weight: Accessories not included.

•Make sure in advance of the product dimensions for installation to dedicated or automated machine. (Frame outer dimension, screw size, distance between screws, etc.)
 •GT-NS3~GT-NS10L are with blade opening adjustment function. GT-NS50 with this function is by made-to-order. Please contact us.

Square Air Nippers (w/Blade opening adjustment function)

GT-NS20H-1/30H-1

- For gate cutting of resin molded products, automatic welding machines, winding machines, and various other types of wire cutting.
- Equipped with a screw for the blade opening adjustment.
- Blades are OPTION.



RoHS

Reference

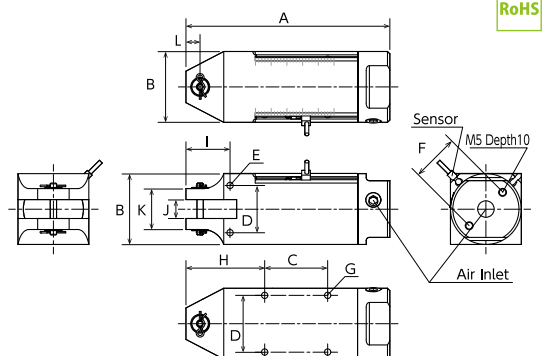
Capacity φ(mm)				Code No.	Model No.	Size(mm)										Air Consumption (cm ³ /str.)	Air Pressure (MPa)	Weight (g)	Hose coupling	JAN (4907587)		
Soft Plastic	Hard Plastic	Copper	Steel			A	B	C	D	E	F	G	H	I	J						K	L
7.0	5.0	2.6	2.0	360021	GT-NS20H-1	129	45	40	36	M5 Depth12	30	M4 Depth7	19	24	12	26	9	230	0.5~0.6	453	Rc 1/8	014702
10.0	6.5	3.3	2.8	360022	GT-NS30H-1	170	56	60	46	M6 Depth12	40	M5 Depth10	20	30	17	36	15	584	0.5~0.6	809		015112

※The capacity is for reference only when mounting a standard blade. Subject to the blade type and the material of the product to cut.
 ※Working air hose inner dia.: 5mm
 ※Overall length and weight: Accessories not included.

Square Air Nipper w/Sensor

GT-NS20SR

- Nipper operation can be detected with the sensor.
- Scales on the top-surface of the body for sensor position adjustment.
- The screw holes for body mounting is on the bottom and the lateral side.
- The air inlet position can be adjusted 180 degrees, so it can be changed freely according to the mounting position of the body.
- Blades are OPTION.



RoHS

Reference

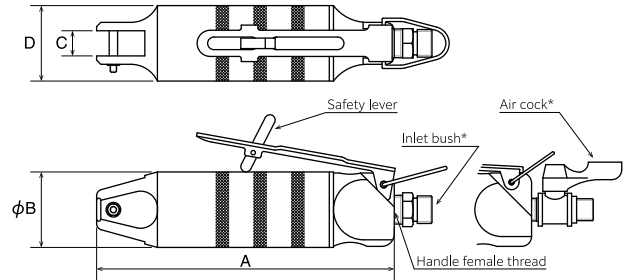
Capacity φ(mm)				Code No.	Model No.	Size(mm)										Air Consumption (cm ³ /str.)	Air Pressure (MPa)	Weight (g)	Hose coupling	JAN (4907587)		
Soft Plastic	Hard Plastic	Copper	Steel			A	B	C	D	E	F	G	H	I	J						K	L
7.0	5.0	2.6	2.0	360034	GT-NS20SR	129	45	40	30	M5 Depth10	30	M4 Depth7	50	28	12	26	9	230	0.5~0.6	404.5	Rc1/8	035141

※The capacity is for reference only when mounting a standard blade, and is subject to the blade type and the material of the product to cut.
 ※Make sure in advance of the product dimensions for mounting in the dedicated or automated machine. (Frame outer dimension, screw size, distance between screws, etc.)
 ※Working air hose inner dia.: 4mm ※Overall length and Weight: Accessories not included. The tightening torque of a screw ("G" in the above diagram) to mount the nipper body is 1.5N·m.

Air Nippers with Safety Lever

GT-NL

- For cutting plastic and steel, or for crimping work.
- With the made-to-order blades, the supported range of applications is endless.
- Safer and more efficient. Less fatigue.
- Blades are OPTION.



*The inlet bush (Rc1/4) is equipped with the NL3, NL5, NL7, NL10, and NL12.
*The air cock (Rc1/4) is equipped with the NL20, NL30, and NL50.

Reference

Capacity ϕ (mm)				Code No.	Model No.	Size(mm)				Air Consumption (cm ³ /str.)	Air Pressure (MPa)	Weight (g)	Handle Female Thread dia.	Hose coupling	JAN (4907587)
Soft Plastic	Hard Plastic	Copper	Steel			A	B	C	D						
2.0		1.0	0.5	360771	GT-NL3	112	23	7	14	45	0.4~0.5	70	Rc 1/8	Rc 1/4	035257
2.0		1.0	0.5	360772	GT-NL5	103	30	7	17	64	0.4~0.5	110			035264
3.0	2.0	1.6	1.0	360773	GT-NL7	123	34	9	17	116	0.4~0.5	150			035271
4.0	2.6	1.8	1.2	360774	GT-NL10	132	34	9	17	116	0.5~0.6	215	Rc 1/4	Rc 1/4	035288
4.5	4.0	2.3	1.7	360775	GT-NL12	142	36	12	20	230	0.5~0.6	280			035295
7.0	5.0	2.6	2.0	360776	GT-NL20	148	45	12	23	584	0.5~0.6	505			035301
10.0	6.5	3.3	2.8	360777	GT-NL30	185	56	17	30	1,170	0.5~0.6	1,190	Rc 1/4	Rc 1/4	035318
12.0	6.5	5.5	4.5	360778	GT-NL50	237	75	25.2	43	1,212	0.5~0.6	1,005			035325

The capacity is for reference only when mounting a standard blade. Subject to the blade type and the material of the product to cut.
※Working air hose inner dia.: 5mm ※Overall length / Weight: Accessories not included.

The existing GT-N will be discontinued as soon as the stock runs out, and the GT-NL will be the replacement model after the discontinuation.

Air Nipper Round-Type without Lever

GT-NR3/5/7/10L/20/30/50

- The air inlet position can be adjusted 180 degrees, so it can be changed freely according to the mounting position of the main unit. (except GT-NR50F)
- Blades are OPTION.

RoHS

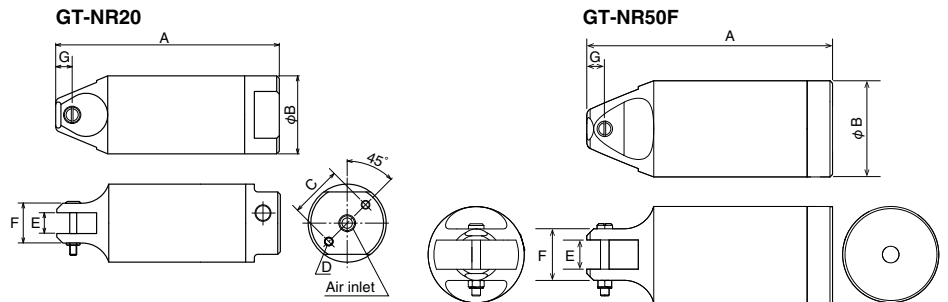


GT-NR20

• The NR20 is with a scale on both side of the body.



GT-NR50F



Reference

Capacity ϕ (mm)				Code No.	Model No.	Size(mm)							Air Consumption (cm ³ /str.)	Air Pressure (MPa)	Weight (g)	Hose coupling	JAN (4907587)
Soft Plastic	Hard Plastic	Copper	Steel			A	B	C	D	E	F	G					
2.0		1.0	0.5	360015	GT-NR3	110	23	17	M3 Depth8	7	14	7	45	0.4~0.5	70	Rc 1/8	308214
2.0		1.0	0.5	360016	GT-NR5	94	30	20	M4 Depth10	7	17	7	64	0.4~0.5	110		308221
3.0	2.0	1.6	1.0	360017	GT-NR7	113	34	22	M4 Depth10	9	17	7	116	0.4~0.5	150		308238
4.0	2.6	1.8	1.2	360018	GT-NR10L	113	36	24	M4 Depth10	12	20	7	116	0.5~0.6	215		308245
7.0	5.0	2.6	2.0	360019	GT-NR20	129	45	30	M5 Depth12	12	23	9.5	230	0.5~0.6	280		308252
10.0	6.5	3.3	2.8	360020	GT-NR30	165	56	40	M6 Depth12	17	30	10.5	584	0.5~0.6	505	Rc 1/4	308269
		5.5	4.5	360024	GT-NR50	222	75	50	M8 Depth12	25.2	43	15	1,170	0.5~0.6	1,190		308276
				360026	GT-NR50F	158	75	-	-	17	31	9	1,212	0.5~0.6	1,005		014689

※The capacity is for reference only when mounting a standard blade. Subject to the blade type and the material of the product to cut.

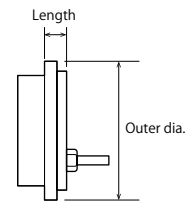
※Make sure in advance of the product dimensions for installation to dedicated or automated machine. (Frame outer dimension, screw size, distance between screws, etc.)

※Use the NR50ST (option) for installation of the GT-NR50F.

※Working air hose inner dia.: 5mm ※Overall length, weight: Accessories not included.

Blade Opening Adjustment End-Cap

- Optional part for reducing the blade opening width.
- Can adjust with a screw at the rear of the end-cap.



Code No.	Size		Hose Coupling	Applicable Nippers (GT-)	JAN (4907587)
	Length	Outer dia.			
855166	4	23	Rc1/8	NS3, NR3	-
855167	7	30	Rc1/8	NS5, NR5	-
855168	7	34	Rc1/8	NR7	-
855169	7	36	Rc1/8	NS7, NS 10L, NR10L	-
855170	12	45	Rc1/8	NS20, NR20	-
855171	8	56	Rc1/8	NS30, NR30	-
854922	16	45	Rc1/8	NS20A, NR20A	-
854923	14	56	Rc1/8	NS30A, NR30A	-

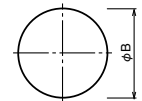
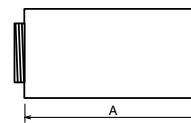
Extra Pressure Boosters

P-10L/20/30/50

- For the application that the originally required pressure cannot be obtained because of the limit of the space and the air pressure.



P-20



Reference

Capacity φ(mm)				Code No.	Model No.	Size(mm)		Air Consumption (cm³/str.)	Air Pressure (MPa)	Applicable Models	Weight (g)	JAN (4907587)
Soft Plastic	Hard Plastic	Copper	Steel			A	B					
5.0	4.0	2.6	1.6	360051	P-10L	71	36	223	Up to 0.5	NS10L, NR10L, N12	115	318008
8.0	6.0	3.0	2.2	360052	P-20	87	45	508	Up to 0.5	N20, NS20, NR20	215	318015
13.0	7.0	4.8	4.0	360053	P-30	92	56	956	Up to 0.5	N30, NS30, NR30	330	318022
		6.5	5.5	360054	P-50	133	75	2,670	Up to 0.5	N50, NR50	840	318039

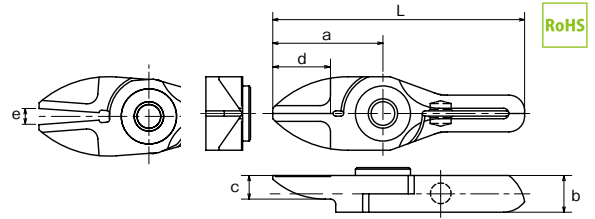
※The capacity is for reference only when mounting a standard blade. Subject to the blade type and the material of the product to cut.

※The overall length and the weight are for the pressure booster only. When attached, the total length will be the sum of the nipper body and the booster.

Straight blades for plastic

AJ/RAJ

Plastic AJ/Upright blade with an unbeveled cutting edge.
Can be applied at a right angle to the gate.
RAJ/Reversed blade of RAJ/AJ type.



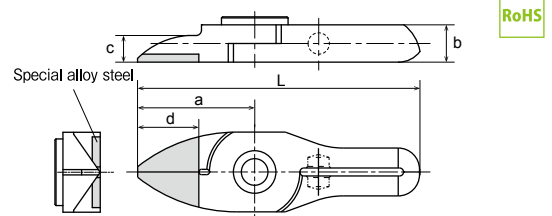
NY NF

Capacity ϕ (mm)				Code No.	Model No.	Size(mm)					Weight (g)	Applicable Models	JAN (4907587)	
Soft Plastic	Hard Plastic	Copper	Steel			a	b	c	d: Effective Length	e				L
2.0	1.3			360591	NY03AJ	21	7	4.5	11.5	3	48	17	GT-NY03G(-4) / NF03	370662
2.0	1.3			360594	NY03RAJ	21	7	4.5	11.5	3	48	17	GT-NY03GR(-4) / NF03	370693
3.0	2.0			360551	NY05AJ	22	7	5	11.5	4	53	22	GT-NY05(-4) / NF05	370341
3.0	2.0			360556	NY05RAJ	22	7	5	11.5	4	53	22	GT-NY05R(-4) / NF05	370396
3.5	2.3			360561	NY10AJ	24	7.2	5	13.5	6	57	28	GT-NY10(-4) / NY10G(-4) / NF10 / NY10S	370433
3.5	2.3			360566	NY10RAJ	24	7.2	5	13.5	6	57	28	GT-NY10R(-4) / NY10GR(-4) / NF10 / NY10S	370488
4.0	2.6			360571	NY15AJ	27	8.2	5.5	14.5	8	65	41	GT-NY15(-4) / NF15	370518
4.0	2.6			360576	NY15RAJ	27	8.2	5.5	14.5	8	65	41	GT-NY15R(-4) / NF15	370563
5.0	3.4			360583	NY25AJ	31	10	6	17.5	9	77	65	GT-NY25(-6) / NY25S / NF25	370594
5.0	3.4			360587	NY25RAJ	31	10	6	17.5	9	77	65	GT-NY25R(-6) / NY25S / NF25	370631

Straight blades for plastic (Carbide tipped)

AJB/RAJB

Plastic AJB/Carbide tipped (brazing), for cutting hard plastic or glass-fiber containing plastic.



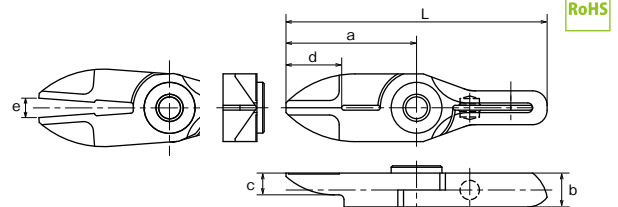
NY NF

Capacity ϕ (mm)				Code No.	Model No.	Size(mm)					Weight (g)	Applicable Models	JAN (4907587)	
Soft Plastic	Hard Plastic	Copper	Steel			a	b	c	d: Effective Length	e				L
3.0	2.0			360553	NY05AJB	22	7	5	11.5	4	53	22	GT-NY05(-4) / NF05	370365
3.0	2.0			360579	NY05RAJB	22	7	5	11.5	4	53	22	GT-NY05R(-4) / NF05	008978
3.5	2.3			360563	NY10AJB	24	7.2	5	13.5	6	57	28	GT-NY10(-4) / NY10G(-4) / NF10 / NY10S	370457
3.5	2.3			360580	NY10RAJB	24	7.2	5	13.5	6	57	28	GT-NY10R(-4) / NY10GR(-4) / NY10S / NF10	008985
4.0	2.6			360573	NY15AJB	27	8.2	5.5	14.5	8	65	41	GT-NY15(-4) / NF15	370532
4.0	2.6			360581	NY15RAJB	27	8.2	5.5	14.5	8	65	41	GT-NY15R(-4) / NF15	008992
5.0	3.4			360585	NY25AJB	31	10	6	17.5	9	77	72	GT-NY25(-6) / NY25S / NF25	370617
5.0	3.4			360582	NY25RAJB	31	10	6	17.5	9	77	72	GT-NY25R(-6) / NY25S / NF25	009005

Straight long blades for plastic

AJL/RAJL

Plastic AJL/Long type of straight blade. Effective when there is a distance between the nipper and the cutting point of the gate of the workpiece.



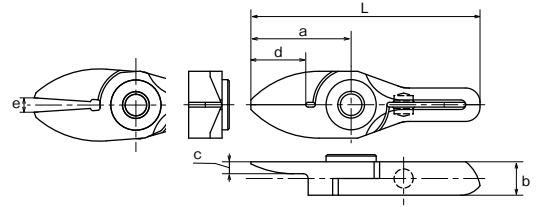
NY NF

Capacity ϕ (mm)				Code No.	Model No.	Size(mm)					Weight (g)	Applicable Models	JAN (4907587)	
Soft Plastic	Hard Plastic	Copper	Steel			a	b	c	d: Effective Length	e				L
1.6	1.1			360592	NY03AJL	27	7	4.5	11.5	4	54	21	GT-NY03G(-4) / NF03	370679
1.6	1.1			360595	NY03RAJL	27	7	4.5	11.5	4	54	21	GT-NY03GR(-4) / NF03	009913
2.8	1.6			360552	NY05AJL	31	7	5	11.5	5.5	62	29	GT-NY05(-4) / NF05	370358
2.8	1.6			360596	NY05RAJL	31	7	5	11.5	5.5	62	29	GT-NY05R(-4) / GT-NF05	009920
3.2	2.1			360562	NY10AJL	33	7.2	5	13.5	8	66	37	GT-NY10(-4) / NY10G(-4) / NF10 / NY10S	370440
3.2	2.1			360597	NY10RAJL	33	7.2	5	13.5	8	66	37	GT-NY10R(-4) / NY10GR(-4) / NY10S / NF10	009937
3.7	2.3			360572	NY15AJL	38	8.2	5.5	14.5	11	76	50	GT-NY15(-4) / NF15	370525
3.7	2.3			360598	NY15RAJL	38	8.2	5.5	14.5	11	76	50	GT-NY15R(-4) / GT-NF15	009944
4.7	3.0			360584	NY25AJL	46	10	6	17.5	13	92	88	GT-NY25(-6) / NY25S / NF25	370600
4.7	3.0			360599	NY25RAJL	46	10	6	17.5	13	92	88	GT-NY25R(-6) / NY25S / NF25	009951

Thin, straight blades for plastic | AJT

Plastic AJT/This is a set of straight blades with a thin cutting edge. It can cleanly trim cross sections without remnants.

RoHS



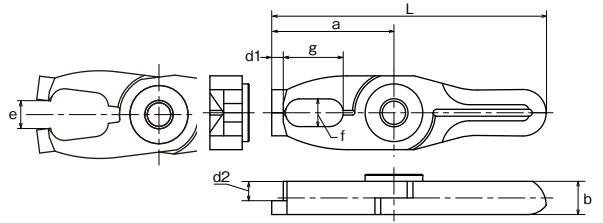
NY NF

Capacity ϕ (mm)				Code No.	Model No.	Size(mm)					Weight (g)	Applicable Models	JAN (4907587)	
Soft Plastic	Hard Plastic	Copper	Steel			a	b	c	d: Effective Length	e				L
2.0	1.3			360593	NY03AJT	21	7	2.5	11.5	3	48	17	GT-NY03G(-4) / NF03	370686
3.0	2.0			360554	NY05AJT	22	7	3	11.5	4	53	21	GT-NY05(-4) / NF05	370372
3.5	2.3			360564	NY10AJT	24	7.2	3	13.5	6	57	26	GT-NY10(-4) / NY10G(-4) / NF10 / NY10S	370464
4.0	2.6			360574	NY15AJT	27	8.2	3.5	14.5	8	65	38	GT-NY15(-4) / NF15	370549

Over-ride blades for plastic | AD

Plastic AD/This is used for batch processing of the three-dimensional gate such as ride gate.

RoHS



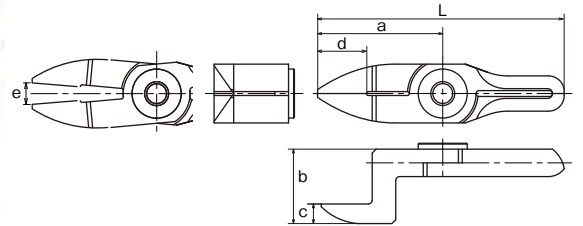
NY NF

Capacity ϕ (mm)				Code No.	Model No.	Size(mm)			Effective length(mm)		e(mm)	L(mm)	Weight (g)	Applicable Models	JAN (4907587)
Soft Plastic	Hard Plastic	Copper	Steel			a	b	f×g	d1	d2					
2.3	1.6			360568	NY10AD	26.5	7.2	6×13	2.5	4.2	6	59.5	31	GT-NY10(-4) / NY10G(-4) / NF10 / NY10S	370501
2.6	2.2			360578	NY15AD	30	8.2	7×14	3	4.7	8	68	45	GT-NY15(-4) / NF15	370587
3.3	2.0			360589	NY25AD	35	10	8×17	4	6	9	81	75	GT-NY25(-6) / NY25S / NF25	370655

Crank blades for plastic | AH/RAH

Plastic AH/Crank shaped blade for plastic. Effective when there are obstacles in the way or the gate section is too narrow.
RAH/Reversed blade of AH type that is used when the nippers are installed facing each other.

RoHS



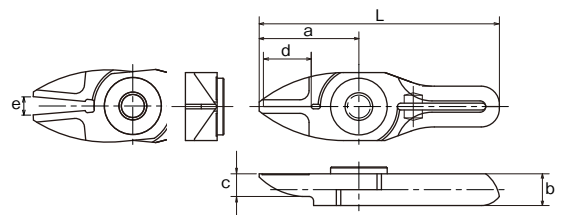
NY NF

Capacity ϕ (mm)				Code No.	Model No.	Size(mm)					Weight (g)	Applicable Models	JAN (4907587)	
Soft Plastic	Hard Plastic	Copper	Steel			a	b	c	d: Effective Length	e				L
3.0	2.0			360555	NY05AH	31	19	5	11.5	5.5	62	37	GT-NY05(-4) / NF05	370389
3.0	2.0			360557	NY05RAH	30	12	5	11.5	5	61	31	GT-NY05R(-4) / NF05	370402
3.5	2.3			360565	NY10AH	33	20	5	13.5	8	66	43	GT-NY10(-4) / NY10G(-4) / NF10 / NY10S	370471
3.5	2.3			360567	NY10RAH	32	12.2	5	13.5	7	65	36	GT-NY10R(-4) / NY10GR(-4) / NF10 / NY10S	370495
4.0	2.6			360575	NY15AH	38	21.5	5.5	14.5	11	76	63	GT-NY15(-4) / NF15	370556
4.0	2.6			360577	NY15RAH	35	13.2	5.5	14.5	9	73	52	GT-NY15R(-4) / NF15	370570
5.0	3.4			360586	NY25AH	46	24	6	18.5	13	92	110	GT-NY25(-6) / NY25S / NF25	370624
5.0	3.4			360588	NY25RAH	42	16	6	17.5	12	88	89	GT-NY25R(-6) / NY25S / NF25	370648

Straight blades for metal | BJ/RBJ

Metal BJ/Upright type blade for metal with an unbeveled cutting edge.
RBJ/Reversed blade of BJ type.

RoHS NY NF



Capacity ϕ (mm)				Code No.	Model No.	Size(mm)					Weight (g)	Applicable Models	JAN (4907587)	
Soft Plastic	Hard Plastic	Copper	Steel			a	b	c	d: Effective Length	e				L
	2.0	1.0	1.6	360558	NY05BJ	22	7	5	11.5	4	53	22	GT-NY05(-4) / NF05	370419
	2.0	1.0	1.6	360559	NY05RBJ	22	7	5	11.5	4	53	22	GT-NY05R(-4) / NF05	370426

Straight Blade - Single Cutting Edge (Carbide tipped)

IRBJB

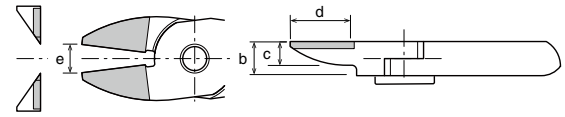


Straight shape blade (flat shape) for metal.
The carbide tips are brazed on the cutting edges for further improved durability.

RoHS



NY10RBJB



NY NF

Capacity ϕ (mm)				Code No.	Model No.	Size(mm)					Weight (g)	Applicable Models	JAN (4907587)	
Soft Plastic	Hard Plastic	Copper	Steel			a	b	c	d: Effective Length	e				L
		1.0	0.5	360506	NY03RBJB	21	7	4.5	10.5	3	48	17	GT-NY03GR / NF03	035660
		1.6	1.0	360507	NY05RBJB	22	7	5	10.5	4	53	24	GT-NF05	035677
		1.7	1.1	360508	NY10RBJB	24	7.2	5	12	6	57	29	GT-NF10	035684
		1.8	1.2	360509	NY15RBJB	27	8.2	5.5	13	8	65	41	GT-NF15	035691
		2.2	1.6	360510	NY25RBJB	31	10	6	16	9	77	70	GT-NY25R / 25S / NF25	035707

Straight blades for plastic

AJ/AJH/AJB

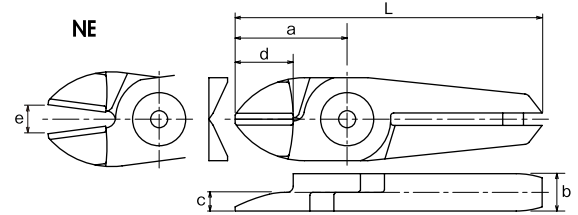
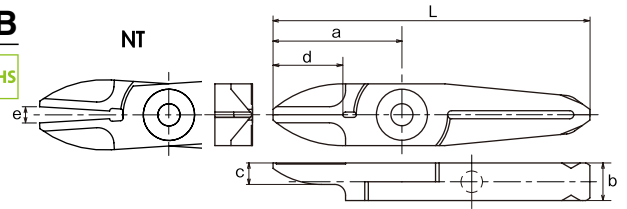


AJ/Upright blade with an unbeveled cutting edge. Can be applied at a right angle to the gate.

AJH/HSS tipped (brazing) for cutting hard plastic.

AJB/Carbide tipped (brazing), for cutting hard plastic or glass-fiber containing plastic. Improved durability.

RoHS



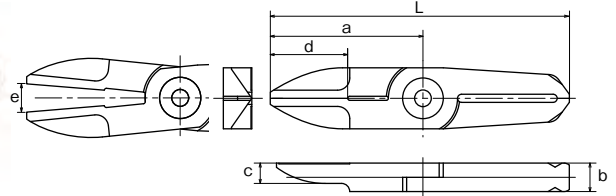
NT

Capacity ϕ (mm)				Code No.	Model No.	Size(mm)					Weight (g)	Applicable Models	JAN (4907587)	
Soft Plastic	Hard Plastic	Copper	Steel			a	b	c	d: Effective Length	e				L
1.5	1.0			360511	NT03AJ	24	7	4	13	3	59	20	GT-NT03 types	370037
2.5	1.5			360512	NT05AJ	29	7	5	17.5	6	65	30	GT-NT05 types	370044
2.5	1.5			360534	NT05AJH	29	7	5	17.5	6	65	30		370198
2.5	1.5			360515	NT05AJB	29	7	5	17.5	6	65	30		370075
2.5	1.5			360184	NE5AJ	24	7	3.5	12	6	60	35	GT-NT10 types	372444
3.5	2.3			360513	NT10AJ	35	9	6	21	7	82	62		370051
3.5	2.3			360539	NT10AJH	35	9	6	21	7	82	76		370242
3.5	2.3			360518	NT10AJB	35	9	6	21	7	82	76	GT-NT20 types	370105
3.5	2.3			360185	NE10AJ	27	9	4.5	12	7	74	70		372451
5.0	3.4			360514	NT20AJ	40	12	6	24	9	97	120	GT-NT20 types	370068
4.5	3.2			360544	NT20AJH	40	12	6	24	9	97	120		370297
5.0	3.4			360543	NT20AJB	40	12	6	24	9	97	120		370280

Straight long blades for plastic | AJL

Plastic AJL/This is a long type set of straight blades. This is useful when there is distance between the nipper and the gate cut portion of the molded object.

RoHS



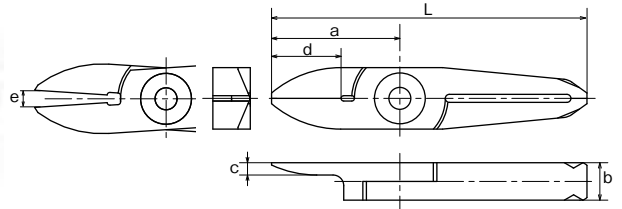
NT

Capacity ϕ (mm)				Code No.	Model No.	Size(mm)						Weight (g)	Applicable Models	JAN (4907587)
Soft Plastic	Hard Plastic	Copper	Steel			a	b	c	d: Effective Length	e	L			
2.0	1.3			360516	NT05AJL	36	7	5	17.5	7	72	39	GT-NT05 types	370082
3.0	2.0			360520	NT10AJL	47	9	6	21	9	94	62	GT-NT10 types	370129
4.5	3.2			360541	NT20AJL	57	12	6	24	12	114	156	GT-NT20 types	370266

Thin, straight blades for plastic | AJT

Plastic AJT/This is a set of straight blades with a thin cutting edge. It can cleanly trim cross sections without remnants.

RoHS



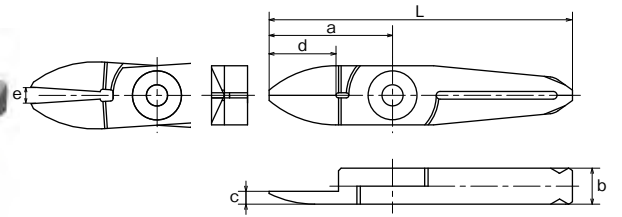
NT

Capacity ϕ (mm)				Code No.	Model No.	Size(mm)						Weight (g)	Applicable Models	JAN (4907587)
Soft Plastic	Hard Plastic	Copper	Steel			a	b	c	d: Effective Length	e	L			
1.5	1.0			360526	NT03AJT	24	7	2.3	13	3	59	19	GT-NT03 types	370143
2.5	1.5			360531	NT05AJT	29	7	3	17.5	6	65	29	GT-NT05 types	370167
3.5	2.3			360536	NT10AJT	35	9	4	21	7	82	65	GT-NT10 types	370211

Thin, straight blades for plastic (approaching to a gate) | AJY

Plastic AJY/This is effective when the width between the opposing gates is too short and the blade cannot go in due to its thickness.

RoHS



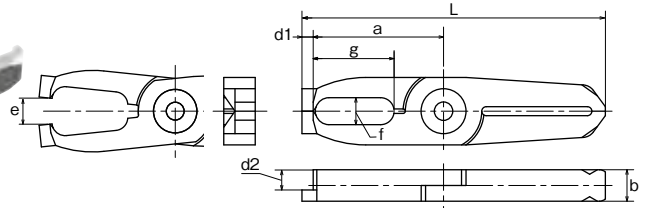
NT

Capacity ϕ (mm)				Code No.	Model No.	Size(mm)						Weight (g)	Applicable Models	JAN (4907587)
Soft Plastic	Hard Plastic	Copper	Steel			a	b	c	d: Effective Length	e	L			
1.5	1.0			360527	NT03AJY	24	7	2.5	13	3	59	19	GT-NT03 types	370150
2.5	1.5			360532	NT05AJY	29	7	3	17.5	6	65	29	GT-NT05 types	370174
3.5	2.3			360537	NT10AJY	35	9	4	21	7	72	82	GT-NT10 types	370228

Over-ride blades for plastic | AD

Plastic AD/This is used for batch processing of the three-dimensional gate such as ride gate.

RoHS



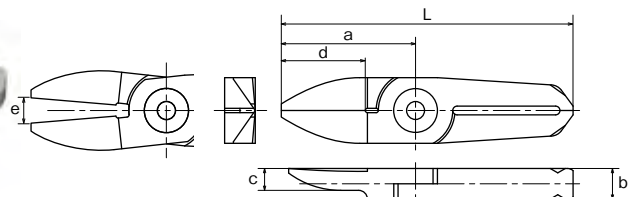
NT

Capacity ϕ (mm)				Code No.	Model No.	Size(mm)			Effective length(mm)		e(mm)	L(mm)	Weight (g)	Applicable Models	JAN (4907587)
Soft Plastic	Hard Plastic	Copper	Steel			a	b	f×g	d1	d2					
2.5	1.2			360533	NT05AD	31.5	7	6×18	2.5	4.5	6	67.5	37	GT-NT05 types	370181
3.5	2.1			360538	NT10AD	39	9	8×21.5	4	5	7	86	65	GT-NT10 types	370235
5.0	2.0			360542	NT20AD	46	12	9×24.5	6	7	9	103	141	GT-NT20 types	370273

V shaped straight blades for plastic | AJV

Plastic AJV/This is suitable for gate processing when the cross section is curved or the cut end must not be left.

RoHS



NT

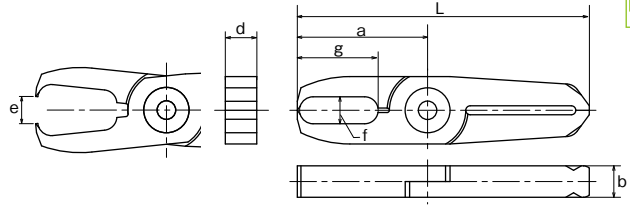
Capacity ϕ (mm)				Code No.	Model No.	Size(mm)						Weight (g)	Applicable Models	JAN (4907587)
Soft Plastic	Hard Plastic	Copper	Steel			a	b	c	d: Effective Length	e	L			
2.5	1.5			360535	NT05AJV	29	7	5	17.5	6	65	29	GT-NT05 types	370204
3.5	2.3			360540	NT10AJV	35	9	6	21	7	82	63	GT-NT10 types	370259

Nipping blades for plastic

AE

Plastic AE/Used for processing plastic gates such as ride gates and discard gates.

RoHS



NT

Capacity ϕ (mm)				Code No.	Model No.	Size(mm)					Weight (g)	Applicable Models	JAN (4907587)	
Soft Plastic	Hard Plastic	Copper	Steel			a	b	f×g	d: Effective Length	e				L
2.5	1.3			360517	NT05AE	29	7	6×18	7	6	65	36	GT-NT05 types	370099
3.5	2.1			360519	NT10AE	35	9	8×21.5	9	7	82	75	GT-NT10 types	370112

NM Blades

NM

NM blades eliminate troubles caused by spring breakage. Can be mounted on the VESSEL current air nippers. Periodic replacement of spring is no more necessary as the magnet works semi-permanently.
● Patented.

RoHS

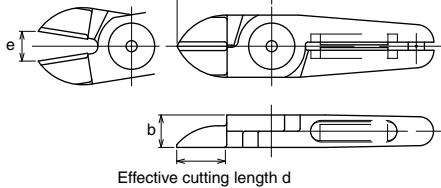


- Ideal for around-the-clock operations
- Semi-permanent magnetic force
- Compatible with our standard nipper bodies

NS NL NR NB

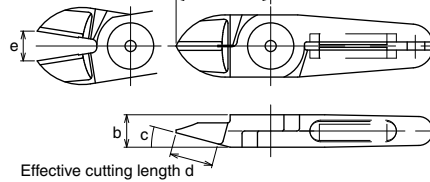
Straight Thin

AJ type



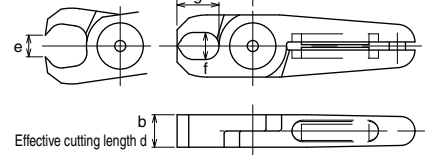
For plastic parts

AP type



Nipping type / For plastic parts

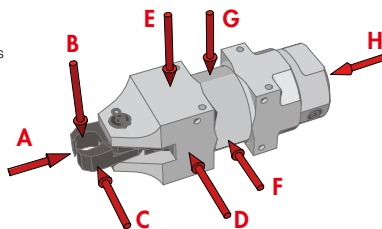
AE type



Capacity ϕ (mm)				Code No.	Model No.	Size(mm)					Weight (g)	Applicable Models	JAN (4907587)	
Soft Plastic	Hard Plastic	Copper	Steel			a	b	c(°)	d	e				f×g
7.0	5.0			360246	NM20AJ	35	12	-	18	11	-	116	GT-NS20 (A) / NL20 / NR20 (A) / NB20	372765
7.0	5.0			360247	NM20AP	35	12	15	16	11	-	124	GT-NS20 (A) / NL20 / NR20 (A) / NB20	372772
7.0	5.0			360248	NM20AE	28	12	-	12	8	10×15.5	129	GT-NS20 (A) / NL20 / NR20 (A) / NB20	372789
10.0	6.5			360261	NM30AJ	52	17	-	28	14	-	360	GT-NS30 (A) / NL30 / NR30 (A) / NB30	372918
10.0	6.5			360262	NM30AP	66	17	15	38	16	-	380	GT-NS30 (A) / NL30 / NR30 (A) / NB30	372925
10.0	6.5			360263	NM30AE	45	17	-	17	12	13×28	358	GT-NS30 (A) / NL30 / NR30 (A) / NB30	372932

※Customization also available upon request.

CAUTION
Powerful magnet is used.



Result of magnetic force measurement

If a magnetic sensor for operation check is installed nearby, please confirm the magnetic force level in the following diagram.

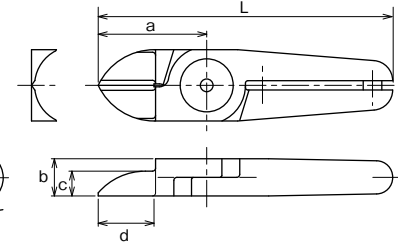
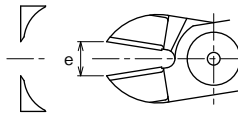
Model No.	A	B	C	D	E	F	G	H
NM20AE	85	10	10	5	32	5	2	0
NM30AE	34	8	8	6	42	15	30	3

Measurement unit: Gauss Measurement device: Gaussmeter GM-1200 manufactured by DENSHIJIKI INDUSTRY Co., Ltd.

Straight blades - Double Cutting Edge

AJ/AJB

Plastic AJ/Upright blade with an unbeveled cutting edge for plastic. Can be applied at a right angle to the gate.
Metal



RoHS

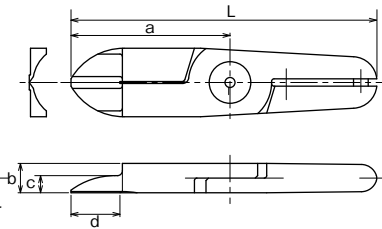
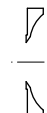
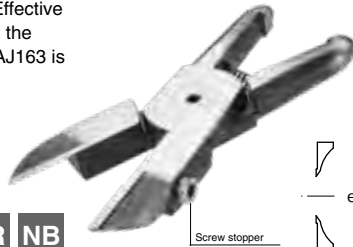
NS NL NR NB

Capacity ϕ (mm)				Code No.	Model No.	Size(mm)				Weight (g)	Applicable Models	JAN (4907587)		
Soft Plastic	Hard Plastic	Copper	Steel			a	b	c	d: Effective Length				e	L
7.0	5.0			360152	N20AJ	35	12	8	18	11	95	125	GT-NS20 (A) / NL20 / NR20 (A) / NB20	372246
7.0	5.0	2.6	2.0	360381	N20AJB	35	12	8	18	11	95	125	GT-NS20 (A) / NL20 / NR20 (A) / NB20	378712
10.0	6.5			360169	N30AJ	52	17	8	28	14	136	370	GT-NS30 (A) / NL30 / NR30 (A) / NB30	372352
10.0	6.5	3.3	2.0	360162	N30AJB	52	17	7.5	25	14	136	349	GT-NS30 (A) / NL30 / NR30 (A) / NB30	035837

Straight long blades for plastic

AJL

Plastic AJL/Long type of straight blade. Effective when there is a distance between the nipper and the cutting point. N30AJ163 is useful for cutting the wide gate.
The image is N20AJL. N20AJL is with screw stopper.



RoHS

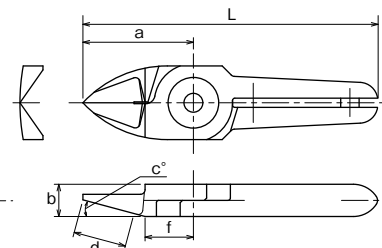
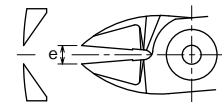
NS NL NR NB

Capacity ϕ (mm)				Code No.	Model No.	Size(mm)				Weight (g)	Applicable Models	JAN (4907587)		
Soft Plastic	Hard Plastic	Copper	Steel			a	b	c	d: Effective Length				e	L
3.5	2.0			360369	N10LAJ141	61	12	7	34	10	115	165	GT-NS10L / NR10L	378590
6.0	4.0			360150	N20AJL	65	12	7	20	16	125	230	GT-NS20 (A) / NL20 / NR20 (A) / NB20	372222
6.5	4.5			360376	N20AB39	61	12	7	36	14	121	185	GT-NS20 (A) / NL20 / NR20 (A) / NB20	378668
8.0	5.0			360389	N30AJ163	65	17	7	41	17.5	149	355	GT-NS30 (A) / NL30 / NR30 (A) / NB30	378798
8.0	5.0			360170	N30AJL	75	17	8	25	19	159	470	GT-NS30 (A) / NL30 / NR30 (A) / NB30	372369

Standard blades for plastic

AP

Plastic AP/Standard blade for cutting plastic. A large curve is on the cutting surface to support the gate whose cut edge must not be left. (The cutting edge is angled.)



RoHS

NS NL NR NB

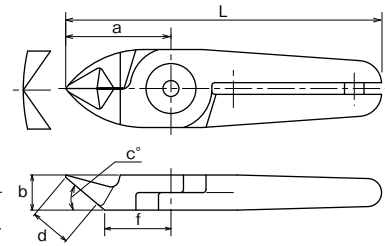
Capacity ϕ (mm)				Code No.	Model No.	Size(mm)				Weight (g)	Applicable Models	JAN (4907587)			
Soft Plastic	Hard Plastic	Copper	Steel			a	b	c(°)	d: Effective Length				e	f	L
2.0				360104	N3AP	24	7	15	11.5	4	10.5	64	35	GT-NS3 / NL3 / NR3	372031
2.0				360114	N5AP	24	7	15	11.5	4	10.5	64	40	GT-NS5 / NL5 / NR5	372086
3.0	2.0			360124	N7AP	27	9	30	11.5	4	14.5	81	80	GT-NS7 / NL7 / NR7	372123
4.0	2.6			360134	N10AP	27	9	30	11.5	5	14.5	91	85	GT-NL10	372185
4.0	2.6			360182	N10LAP	35	12	15	16	5	15	89	120	GT-NS10L / NR10L	372420
4.5	4.0			360144	N12AP	35	12	15	16	5	15	105	135	GT-NL12	372215
7.0	5.0			360155	N20AP	35	12	15	16	11	15	95	125	GT-NS20 (A) / NL20 / NR20 (A) / NB20	372253
10.0	6.5			360165	N30AP	66	17	15	38	16	24	150	380	GT-NS30 (A) / NL30 / NR30 (A) / NB30	372321

Flat blades for plastic

PF



Plastic PF/Blade for cutting plastic, making the cut surface flat. A large curve is on the cutting surface to support the gate whose cut edge must not be left.



RoHS

NS NL NR NB

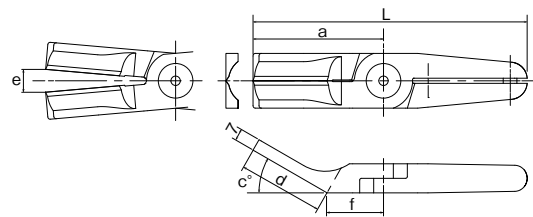
Capacity ϕ (mm)				Code No.	Model No.	Size(mm)					Weight (g)	Applicable Models	JAN (4907587)		
Soft Plastic	Hard Plastic	Copper	Steel			a	b	c(°)	d: Effective Length	e				f	L
3.0	2.0			360127	N7PF	27	9	40	10.5	4	17	81	80	GT-NS7 / NL7 / NR7	372147
4.0	2.6			360183	N10LPF	35	12	40	13.5	5	21	89	120	GT-NS10L / NR10L	372437
7.0	5.0			360160	N20PF	35	12	40	13.5	11	21	95	130	GT-NS20 (A) / NL20 / NR20 (A) / NB20	372307
10.0	6.5			360167	N30PF	58	17	30	25	15	33	142	390	GT-NS30 (A) / NL30 / NR30 (A) / NB30	372345

Flat long blades for plastic

N50FPFL



Plastic PF/Blade for plastic that makes the cut surface flat. Cutting capacity: Soft plastic ϕ 9.5mm, Hard plastic ϕ 5.5mm



RoHS

NR

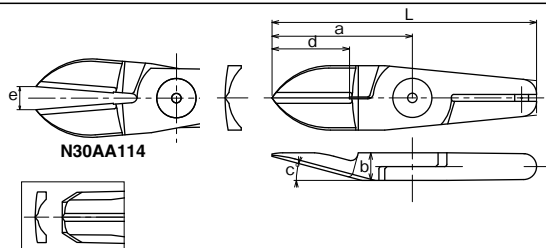
Capacity ϕ (mm)				Code No.	Model No.	Size(mm)					Weight (g)	Applicable Models	JAN (4907587)		
Soft Plastic	Hard Plastic	Copper	Steel			a	b	c(°)	d: Effective Length	e				f	L
9.5	5.5			360179	N50FPFL	76	31	30	50	35	76.3	160	394	GT-NR50F	014696

R blades for plastic

LAB/AA/AB



Plastic A large curve is on the cutting surface to support the gate whose cut edge must not be left. Angled blades can be chosen to match the installation angle of the nipper.



RoHS

NS NL NR NB

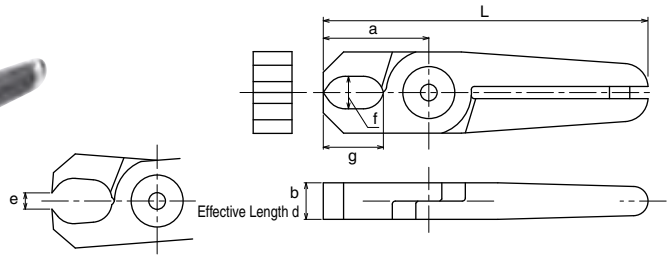
Capacity ϕ (mm)				Code No.	Model No.	Size(mm)					Weight (g)	Applicable Models	JAN (4907587)	
Soft Plastic	Hard Plastic	Copper	Steel			a	b	c(°)	d: Effective Length	e				L
3.5	2.0			360367	N10LAB152	61	12	15	35	10	115	165	GT-NS10 / NR10L	378576
6.5	4.5			360373	N20AA27	45	12	23	25	12	105	145	GT-NS20 (A) / NL20 / NR20 (A) / NB20	378637
6.5	4.5			360372	N20AA239	52.3	12	40	27	14	112.3	195	GT-NS20 (A) / NL20 / NR20 (A) / NB20	378620
6.5	4.5			360375	N20AB360	61	12	15	35	16	121	185	GT-NS20 (A) / NL20 / NR20 (A) / NB20	378651
8.0	5.0			360386	N30AA114	76.3	17	30	50	20	160.3	385	GT-NS30 (A) / NL30 / NR30 (A) / NB30	378767
7.0	5.0			360374	N20AA361	(48.9)	12	60	40	14	(108.9)	188	GT-NS20 (A) / NL20 / NR20 (A) / NB20	378644
4.0	2.6			360368	N10LAB2	61	12	-	36	10	115	159	GT-NS10L / NR10L	378583
10.0	6.5			360387	N30AA160	(76.3)	17	30	44	19	(160.3)	400	GT-NS30(A) / NL30 / NR30(A) / NB30	378774

Nipping blades for plastic

AE

Plastic AE/For cutting plastic gates such as over-ride gate and discard gate.

RoHS



NS NL NR NB

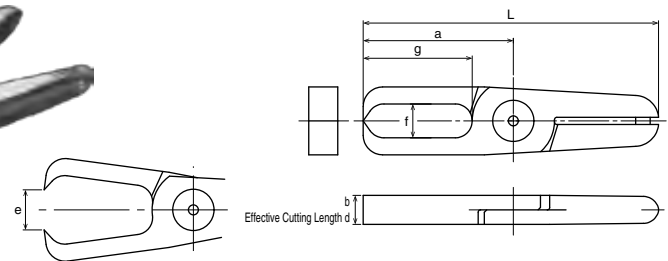
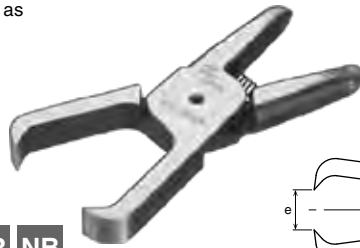
Capacity ϕ (mm)				Code No.	Model No.	Size(mm)				Weight (g)	Applicable Models	JAN (4907587)		
Soft Plastic	Hard Plastic	Copper	Steel			a	b	f×g	d: Effective Length				e	L
2.0				360108	N3AE	20	7	6×11	7	3.5	60	35	GT-NS3 / NL3 / NR3	372055
2.0				360118	N5AE	20	7	6×11	7	3.5	60	40	GT-NS5 / NL5 / NR5	372093
3.0	2.0			360126	N7AE	26	9	8×14.8	9	4	80	85	GT-NS7 / NL7 / NR7	372130
7.0	5.0			360158	N20AE	28	12	10×15.5	12	8	88	135	GT-NS20 (A) / NL20 / NR20 (A) / NB20	372284
10.0	6.5			360166	N30AE	45	17	13×28	17	12	129	395	GT-NS30 (A) / NL30 / NR30 (A) / NB30	372338

Nipping blades for plastic

AE

Plastic AE/For cutting plastic gates such as over-ride gate and discard gate.

RoHS



NS NL NR NB

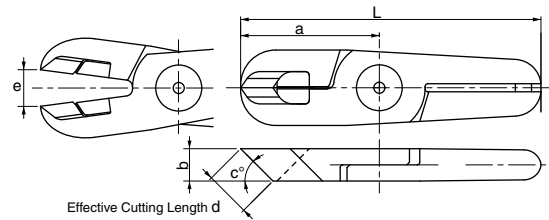
Capacity ϕ (mm)				Code No.	Model No.	Size(mm)				Weight (g)	Applicable Models	JAN (4907587)		
Soft Plastic	Hard Plastic	Copper	Steel			a	b	f×g	d: Effective Length				e	L
5.5	3.5			360378	N20AE1205	62	12	14×45	12	16.5	122	202	GT-NS20 (A) / NL20 / NR20 (A) / NB20	378682
6.5	4.5			360173	N30AE2125	70	17	16×53	17	19.5	154	385	GT-NS30 (A) / NL30 / NR30 (A)	007292

Nipping blades for plastic (Angled)

N20AE19A

Plastic AE/For cutting plastic gates such as over-ride gate and discard gate. The cutting edge is angled so that the nipper can be diagonally installed.

RoHS



NS NL NR NB

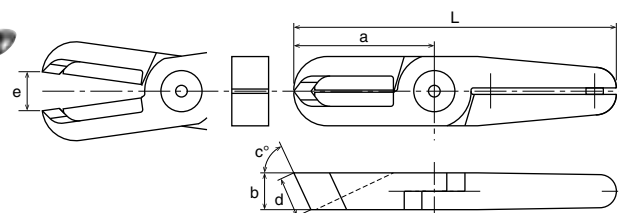
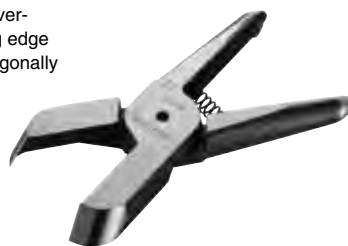
Capacity ϕ (mm)				Code No.	Model No.	Size(mm)				Weight (g)	Applicable Models	JAN (4907587)		
Soft Plastic	Hard Plastic	Copper	Steel			a	b	c(°)	d: Effective Length				e	L
6.0	4.0			360382	N20AE19A	51.5	12	45	(17)	13.5	111.5	200	GT-NS20 (A) / NL20 / NR20 (A) / NB20	010186

Nipping blades for plastic (Angled)

N30AE53A

Plastic AE/For cutting plastic gates such as over-ride gate and discard gate. The cutting edge is angled so that the nipper can be diagonally installed.

RoHS



NS NL NR NB

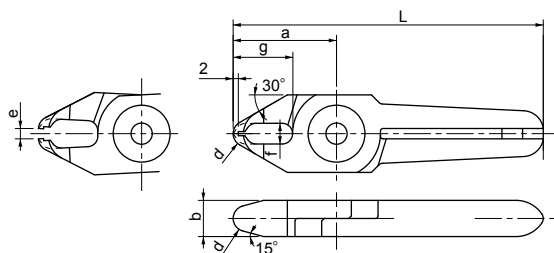
Capacity ϕ (mm)				Code No.	Model No.	Size(mm)				Weight (g)	Applicable Models	JAN (4907587)		
Soft Plastic	Hard Plastic	Copper	Steel			a	b	c(°)	d: Effective Length				e	L
7.0	4.5			360395	N30AE53A	65	17	65	(18.7)	18	149	440	GT-NS30 (A) / NL30 / NR30 (A) / NB30	029744

Nipping blade for pin gates

N3AE406



Plastic Nipping blade for pin gate. Useful for cutting the pin gate coming out from the depression or under the step of the workpiece at the bottom of the step.



RoHS

NS NL NR

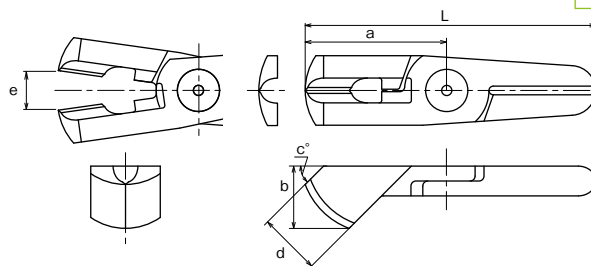
Capacity ϕ (mm)				Code No.	Model No.	Size(mm)						Weight (g)	Applicable Models	JAN (4907587)
Soft Plastic	Hard Plastic	Copper	Steel			a	b	d:Effective Length	f×g	e	L			
1.5	0.8			360174	N3AE406	20	7	R2.5	4×11.5	3.5	60	34	GT-NS3H-1 / NL3 / NS3 / NR3	007308

Nipping blades for sprue cut

N20AK249



Plastic Spherical cutting blade ideal for cutting sprue. The blade can be inserted securely even in narrow areas with ribs around the sprue, resulting in a very clean finish.



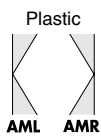
RoHS

NS NL NR NB

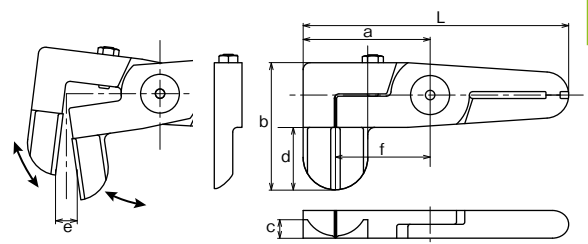
Capacity ϕ (mm)				Code No.	Model No.	Size(mm)						Weight (g)	Applicable Models	JAN (4907587)
Soft Plastic	Hard Plastic	Copper	Steel			a	b	c(°)	d: Effective Length	e	L			
5.5	3.5			360383	N20AK249	57	25	45	25	14	117	240	GT-NS20 (A) / NL20 / NR20 (A) / NB20	378736

Side opening blades for plastic

AML/AMR



AML/AMR For plastic with the cutting edge bent 90°. Effective for the narrow space where ordinary nippers cannot enter.



RoHS

NS NL NR NB

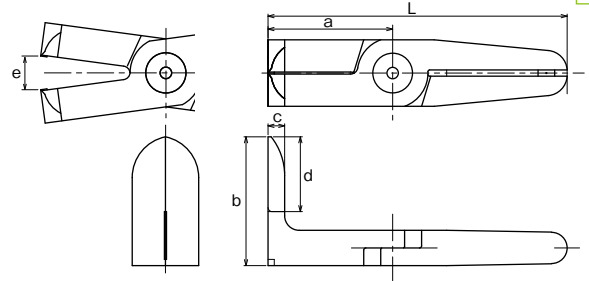
Capacity ϕ (mm)				Code No.	Model No.	Size(mm)							Weight (g)	Applicable Models	JAN (4907587)
Soft Plastic	Hard Plastic	Copper	Steel			a	b	c	d: Effective Length	e	f	L			
10 x 1.5	8 x 1			360384	N20AML1498	55	55	8	26	9.5	41	115	270	GT-NS20 (A) / NL20 / NR20 (A) / NB20	378743
10 x 1.5	8 x 1			360385	N20AMR1499	55	55	8	26	9.5	41	115	270	GT-NS20 (A) / NL20 / NR20 (A) / NB20	378750
15 x 2.0	10 x 1.5			360370	N30AML1435	55	68	10	35	13	39	139	520	GT-NS30 (A) / NL30 / NR30 (A) / NB30	375520
15 x 2.0	10 x 1.5			360371	N30AMR1395	55	68	10	35	13	39	139	520	GT-NS30 (A) / NL30 / NR30 (A) / NB30	375537

L blades for sprue cut

N30AL525



90° angled long type of straight blade. Ideal for cutting the direct gates.



RoHS

NS NL NR NB

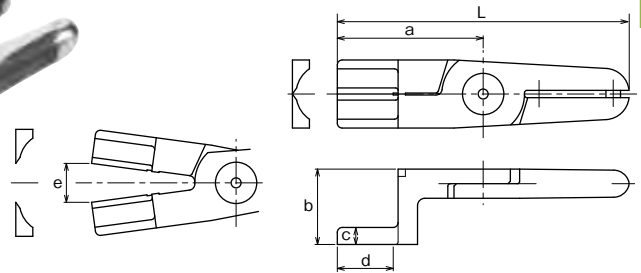
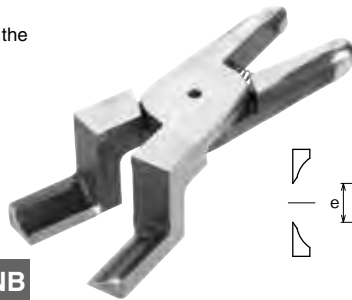
Capacity ϕ (mm)				Code No.	Model No.	Size(mm)							Weight (g)	Applicable Models	JAN (4907587)
Soft Plastic	Hard Plastic	Copper	Steel			a	b	c	d: Effective Length	e	L				
7.5	4.5			360390	N30AL525	60	62	8	36	16	144	520	GT-NS30 (A) / NL30 / NR30 (A) / NB30	378804	

Crank blades for plastic

N20AH



AH/Crank shaped blade for plastic. Effective when there are obstacles in the way or the gate section is too narrow.



RoHS

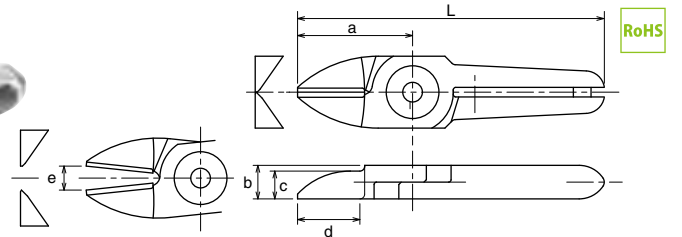
NS NL NR NB

Capacity ϕ (mm)				Code No.	Model No.	Size(mm)							Weight (g)	Applicable Models	JAN (4907587)
Soft Plastic	Hard Plastic	Copper	Steel			a	b	c	d: Effective Length	e	L				
6.0				360149	N20AH	60	31	7	23	16	120	240	GT-NS20 (A) / NL20 / NR20 (A) / NB20	378873	

Straight blades for metal

BJ

BJ/Upright blade with an unbeveled cutting edge for metal.



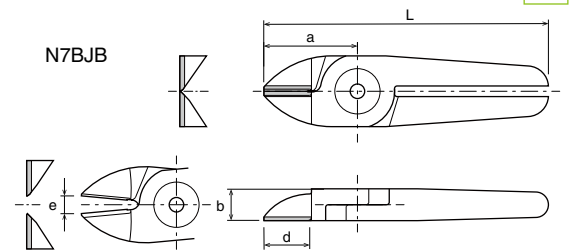
NS NL NR

Capacity ϕ (mm)				Code No.	Model No.	Size(mm)					Weight (g)	Applicable Models	JAN (4907587)	
Soft Plastic	Hard Plastic	Copper	Steel			a	b	c	d:Effective Length	e				L
		1.0	0.5	360106	N3BJ	24	7	5.8	13	5	64	35	GT-NS3 / NL3 / NR3	372048
		1.0	0.5	360119	N5BJ	24	7	5.8	13	4	64	40	GT-NS5 / NL5 / NR5	378552
		1.6	1.0	360128	N7BJ	27	9	7.5	13	5	81	75	GT-NS7 / NL7 / NR7	378569

Straight Blade - Single Cutting Edge (Carbide tipped)

BJB

Straight shape blade (flat blade) for metal. The carbide tips are brazed on the cutting edges for further improved durability.



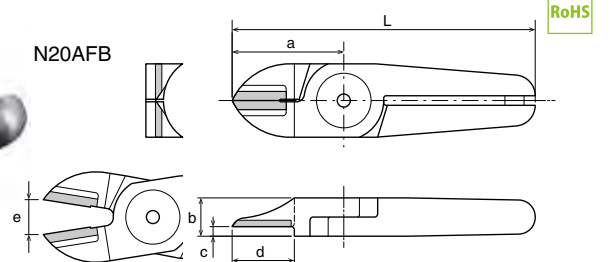
NS NL NR

Capacity ϕ (mm)				Code No.	Model No.	Size(mm)					Weight (g)	Applicable Models	JAN (4907587)
Soft Plastic	Hard Plastic	Copper	Steel			a	b	d: Effective Length	e	L			
		1.0	0.5	360109	N3BJB	21	7	13	5	64	28	GT-NS3 / NL3 / NR3	035813
		1.6	1.0	360129	N7BJB	31	10	14	5.5	81	68	GT-NS7 / NL7 / NR7	035820

Clipper Blade (Carbide tipped)

AFB

Clipper blade for metal. The carbide tips are brazed on the cutting edges for further improved durability.



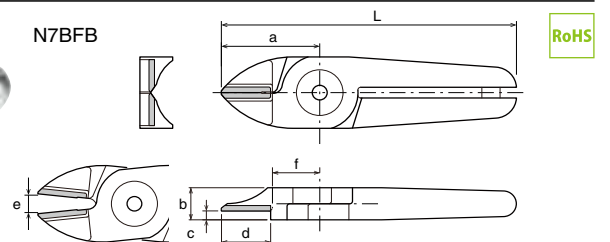
NS NL NR

Capacity ϕ (mm)				Code No.	Model No.	Size(mm)					Weight (g)	Applicable Models	JAN (4907587)	
Soft Plastic	Hard Plastic	Copper	Steel			a	b	c	d: Effective Length	e				L
		2.6	2.0	360153	N20AFB	35	12	3	15	11	95	115	GT-NS20(A) / NL20 / NR20(A)	035868
		3.3	2.8	360163	N30AFB	43	17	4.5	19	11	125	322	GT-NS30(A) / NL30 / NR30(A)	035875

Clipper Blade (Carbide tipped)

BFB

BJ/Upright blade with an unbeveled cutting edge for metal.



NS NL NR

Capacity ϕ (mm)				Code No.	Model No.	Size(mm)					Weight (g)	Applicable Models	JAN (4907587)	
Soft Plastic	Hard Plastic	Copper	Steel			a	b	c(°)	d:Effective Length	e				L
		1.0	0.5	360110	N3BFB	24	7	5.5	13	5	64	28	GT-NS3 / NR3 / NL3	035844
		1.6	1.0	360130	N7BFB	27	9	6.5	27	5.5	81	68	GT-NS7 / NR7 / NL7	035851
		2.6	2.0	360156	N20BFB	35	12	5	17	8	180	150	GT-NS20(A) / NL20 / NR20(A)	372260

Standard Blade - Single Cutting Edge | AS

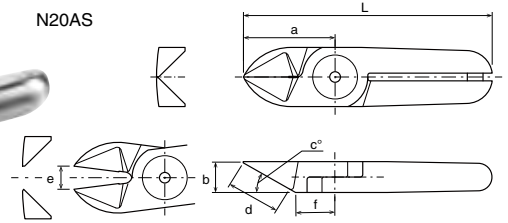


Standard blade (rounded shape) suitable for cutting copper wires, steel wires, and so on.

RoHS



N20AS



NS NL NR

Capacity ϕ (mm)				Code No.	Model No.	Size(mm)				Weight (g)	Applicable Models	JAN (4907587)		
Soft Plastic	Hard Plastic	Copper	Steel			a	b	c(°)	d:Effective Length				e	L
		1.0	0.5	360102	N3AS	24	7	25	12	4	10.5	35	GT-NS3 / NR3 / NL3	372024
		1.0	0.5	360112	N5AS	24	7	25	12	4	10.5	40	GT-NS5 / NR5 / NL5	372079
		1.6	1.0	360122	N7AS	27	9	30	13.5	4	12.5	80	GT-NS7 / NR7 / NL7	372116
		1.8	1.0	360132	N10AS	27	9	30	13.5	5	12.5	85	GT-NL10	372161
		1.8	1.2	360181	N10LAS	35	12	30	20	5	15	85	GT-NL10L / NR10L	372413
		2.3	1.7	360142	N12AS	35	12	30	20	5	15	135	GT-NL12	372208
		2.6	2.0	360151	N20AS	35	12	30	20	9	15	140	GT-NS20(A) / NL20 / NR20(A)	372239
		3.3	2.8	360161	N30AS	43	9	30	25	9	18	370	GT-NS30(A) / NL30 / NR30(A)	372314

Standard Blade for metal | AS

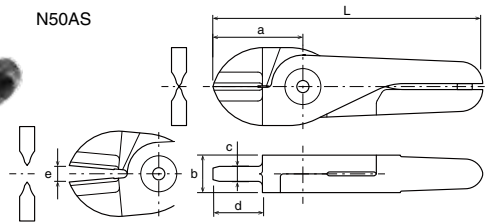


Standard blade (rounded shape) suitable for cutting copper wires, steel wires, and so on.

RoHS



N50AS



NR

Capacity ϕ (mm)				Code No.	Model No.	Size(mm)				Weight (g)	Applicable Models	JAN (4907587)		
Soft Plastic	Hard Plastic	Copper	Steel			a	b	c(°)	d:Effective Length				e	L
		5.5	4.5	360175	N50AS	60	25	10	30	11	180	950	GT-NR50	372390

Standard Blade - Single Cutting Edge (HSS tipped) | HS

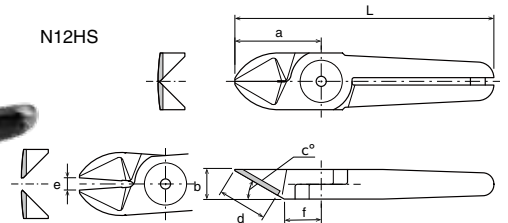


Standard blade (rounded blade) for metal. The high speed steel tips are brazed on the cutting edges for improved durability.

RoHS



N12HS



NS NL NR

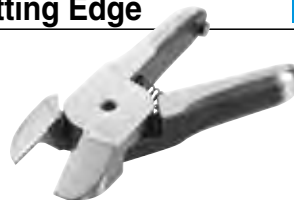
Capacity ϕ (mm)				Code No.	Model No.	Size(mm)				Weight (g)	Applicable Models	JAN (4907587)			
Soft Plastic	Hard Plastic	Copper	Steel			a	b	c(°)	d:Effective Length				e	f	L
		1.0	0.5	360101	N3HS	24	7	25	12	4	10.5	64	35	GT-NS3 / NL3 / NR3	372017
		1.0	0.5	360111	N5HS	24	7	25	12	4	10.5	64	40	GT-NS5 / NL5 / NR5	372062
		1.6	1.0	360121	N7HS	27	9	30	13.5	4	10.5	81	80	GT-NS7 / NL7 / NR7	372109
		1.8	1.2	360131	N10HS	27	9	30	13.5	5	10.5	91	85	GT-NL10	372154
		2.3	1.7	360141	N12HS	35	12	30	20	5	10.5	105	135	GT-NL12	372192

Powerful Cutting Blade - Single Cutting Edge | AG

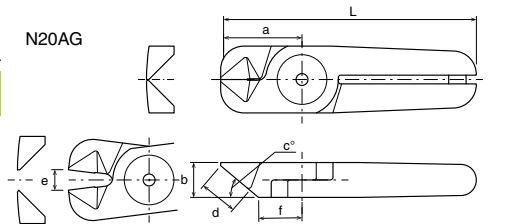


Rounded blade for metal. The cutting edges are designed to be thick by shortening the blade effective length.

RoHS



N20AG



NS NL NR

Capacity ϕ (mm)				Code No.	Model No.	Size(mm)				Weight (g)	Applicable Models	JAN (4907587)			
Soft Plastic	Hard Plastic	Copper	Steel			a	b	c(°)	d:Effective Length				e	f	L
		2.6	2.0	360159	N20AG	28	12	40	12	7	15	88	135	GT-NS20(A) / NL20 / NR20(A)	372291

Powerful Cutting Blade - Single Cutting Edge (HSS tipped) | HS

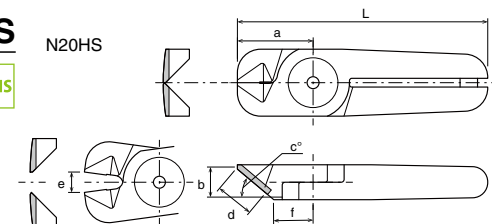


Rounded blade for metal. The cutting edges are designed to be thick by shortening the blade effective length. In addition, the high speed steel tips are brazed for improved durability.

RoHS



N20HS



NS NL NR

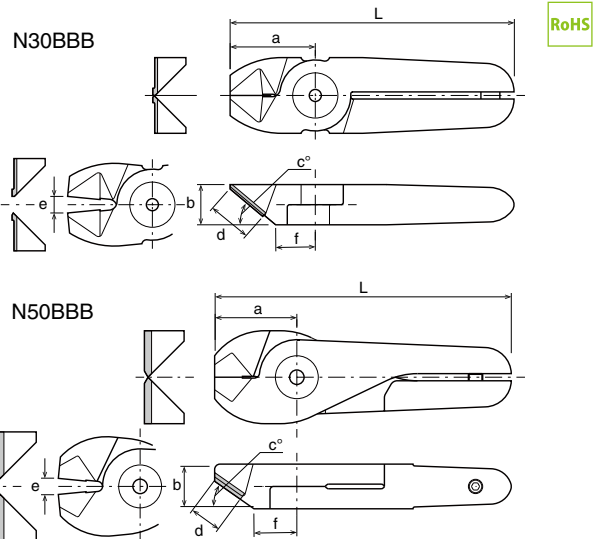
Capacity ϕ (mm)				Code No.	Model No.	Size(mm)				Weight (g)	Applicable Models	JAN (4907587)			
Soft Plastic	Hard Plastic	Copper	Steel			a	b	c(°)	d:Effective Length				e	f	L
		2.6	2.0	360157	N20HS	26	2	40	10	7	13.5	86	135	GT-NS20 (A) / NL20 / NR20 (A)	372277

Powerful cutting blades (Carbide tipped)

BBB

Metal
 N30BBB
 N50BBB

Rounded blade for metal. The cutting edges are designed to be thick by shortening the blade length. In addition, the carbide tips are brazed for further improved durability.
 N50BBB, the double cutting edge type, enables to cut even more powerfully.



NS NL NR

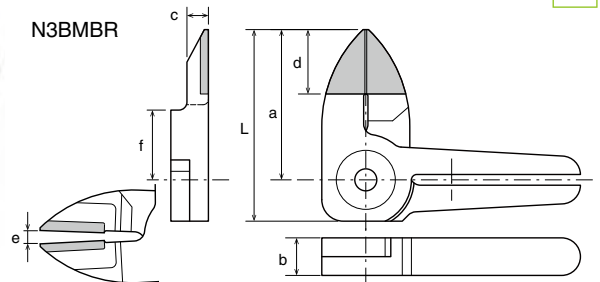
Capacity ϕ (mm)				Code No.	Model No.	Size(mm)						Weight (g)	Applicable Models	JAN (4907587)	
Soft Plastic	Hard Plastic	Copper	Steel			a	b	c(°)	d:Effective Length	e	f				L
		3.3	2.0	360172	N30BBB	36	17	40	18	7	18	120	365	GT-NS30 (A) / NL30 / NR30 (A)	372383
		5.5	4.5	360177	N50BBB	46	25	35	19	9	24	166	955	GT-N50 / NR50	372406

Side Opening Blade - Single Cutting Edge (Carbide tipped)

BMB

Metal

Straight blade for metal with the cutting edge bent 90°. Effective for the narrow space where it is difficult to install an ordinary nipper.



NS NL NR

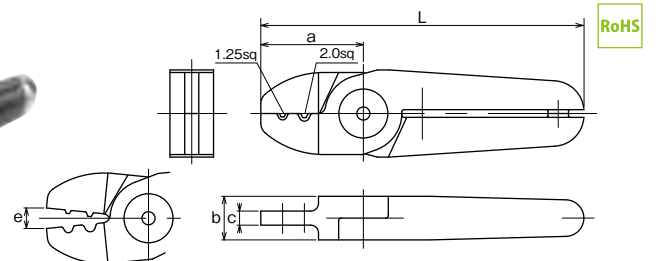
Capacity ϕ (mm)				Code No.	Model No.	Size(mm)						Weight (g)	Applicable Models	JAN (4907587)	
Soft Plastic	Hard Plastic	Copper	Steel			a	b	c(°)	d:Effective Length	e	f				L
		1.0	0.5	360197	N3BMBL	28	7	4	12	5	13	35.5	31	GT-NS3 / NL3 / NR3	035882
		1.0	0.5	360198	N3BMBR	28	7	4	12	5	13	35.5	31	GT-NS3 / NL3 / NR3	035899

Crimp edge for solderless terminals

ACD

Metal

ACD/For crimping solderless terminals. (Bare terminal 1.25sq./2.0sq.)



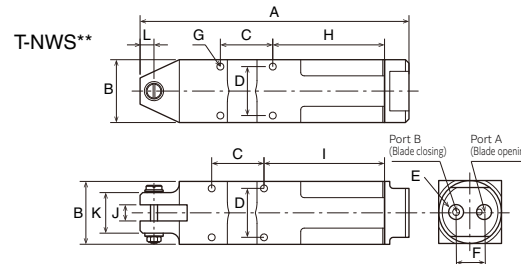
NS NL NR

Capacity ϕ (mm)				Code No.	Model No.	Size(mm)						Weight (g)	Applicable Models	JAN (4907587)
Bare Terminal	1.25sq./2.0sq.					a	b	c	e	L				
				360171	N30ACD	40	17	5.5	8		126	335	GT-NS30 (A) / NL30 / NR30 (A)	372376

Double Action Air Nipper (Square Type)

GT-NWS1/ 10/ 20/ 30

Blade opening and closing is driven by air piston.
Maintenance is easy because there are no spring parts in the nipper body and blade.



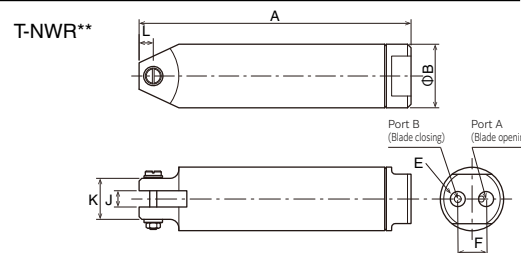
Capacity ϕ (mm)				Code No.	Model No.	Size(mm)											Air Consumption (cm ³ /str.)	Applied Pressure (N)	Weight (g)	Hose I/D (mm)	JAN (4907587)	
Soft Plastic	Hard Plastic	Copper	Steel			A	B	C	D	E	F	G	H	I	J	K						L
	2.0	1.0	0.5	360702	GT-NWS1	95	20 x 18	40	16	M5-P0.8	9	M3 Depth4.5	-	32	5	16	6	95	0.4~0.5	95	I/D ϕ 2.5 x O/D ϕ 4	309730
4.3	4.0	1.8	1.2	360706	GT-NWS10	146	36 x 36	30	28	PT1/8	16	M4 Depth6	64	69	9	23	8	146	0.4~0.5	146	I/D ϕ 4 x O/D ϕ 6	309778
6.8	6.5	2.6	2.0	360707	GT-NWS20	176	45 x 45	40	36	PT1/8	18	M4 Depth8	68.5	73.5	12	26	9.5	165	0.4~0.6	165	I/D ϕ 4 x O/D ϕ 6	309785
9.8	7.5	3.3	2.8	360708	GT-NWS30	231	56 x 56	60	46	PT1/8	24	M5 Depth12	84.5	94.5	17	36	13	230.5	0.4~0.6	230.5	I/D ϕ 4 x O/D ϕ 6	309891

※The capacity is for reference only when mounting a standard blade. Subject to the blade type and the material of the product to cut.
※Overall length, Weight: Accessories not included.

Double Action Air Nipper (Round Type without Lever)

GT-NWR10/ 20/ 30

Blade opening and closing is driven by air piston.
Maintenance is easy because there are no spring parts in the nipper body and blade.



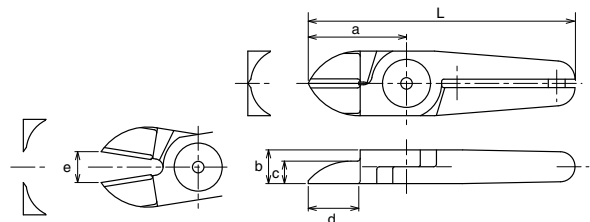
Capacity ϕ (mm)				Code No.	Model No.	Size(mm)								Air Consumption (cm ³ /str.)	Applied Pressure (N)	Weight (g)	Hose I/D (mm)	JAN (4907587)
Soft Plastic	Hard Plastic	Copper	Steel			A	B	E	F	J	K	L						
4.3	4.0	1.8	1.2	360710	GT-NWR10	154	36	PT1/8	16	9	23	8	146	0.4~0.5	95	I/D ϕ 4 x O/D ϕ 6	309808	
6.8	6.5	2.6	2.0	360711	GT-NWR20	159.5	45	PT1/8	18	12	26	9.5	165	0.4~0.6	165	I/D ϕ 4 x O/D ϕ 6	309815	
9.8	7.5	3.3	2.8	360712	GT-NWR30	231.5	56	PT1/4	24	17	36	13	230.5	0.4~0.6	230.5	I/D ϕ 4 x O/D ϕ 6	309822	

※The capacity is for reference only when mounting a standard blade. Subject to the blade type and the material of the product to cut.
※Overall length, Weight: Accessories not included.

Straight blades for plastic

AJ

Plastic AJ/Upright blade with an unbeveled cutting edge for plastic. Can be applied at a right angle to the gate.



RoHS

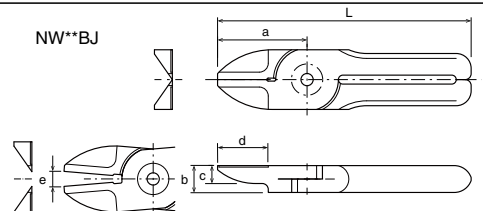
NWR NWS

Capacity ϕ (mm)				Code No.	Model No.	Size(mm)						Weight (g)	Applicable Models	JAN (4907587)
Soft Plastic	Hard Plastic	Copper	Steel			a	b	c	d:Effective Length	e	L			
4.3	4.0	1.0	0.5	360454	NW10AJ	30	9	6	14	5	85	28	GT-NWR10 / NWS10	370716
6.8	6.5	1.6	1.0	360457	NW20AJ	40	12	6	21.5	8	100	68	GT-NWR20 / NWS20	370723
8.5	7.5	2.6	2.0	360461	NW30AJ	55	17	8	33	11	140	150	GT-NWR30 / NWS30	370761

Straight blades for metal

BJ

Metal Straight shape blade (flat shape) for metal.



RoHS

NWR NWS

Capacity ϕ (mm)				Code No.	Model No.	Size(mm)						Weight (g)	Applicable Models	JAN (4907587)
Soft Plastic	Hard Plastic	Copper	Steel			a	b	c	d:Effective Length	e	L			
		1.0	0.5	360450	NW1BJ	20	5	3	10.5	3.5	50	16	GT-NWS1	370006
		1.8	1.2	360453	NW10BJ	30	9	6	14	5	85	76	GT-NWR10 / NWS10	370709
		2.6	2.0	360459	NW20BJ	40	12	6	21.5	8	100	142	GT-NWR20 / NWS20	370747
		3.3	2.8	360460	NW30BJ	55	17	8	29.5	11	140	367	GT-NWR30 / NWS30	370754

Double Action Straight Blade - Single Cutting Edge (Carbide tipped)

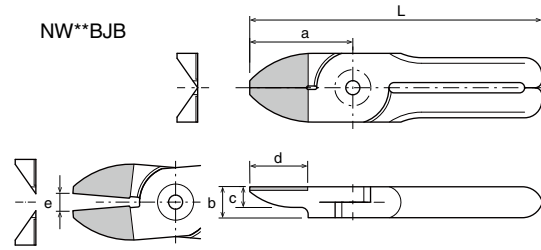
IBJB

Straight shape blade (flat shape) for metal.
The carbide tips are brazed for further improved durability.



NWR NWS

NW**BJB



RoHS

Capacity ϕ (mm)				Code No.	Model No.	Size(mm)					Weight (g)	Applicable Models	JAN (4907587)
Soft Plastic	Hard Plastic	Copper	Steel			a	b	d: Effective Length	e	L			
		1.8	1.2	360464	NW10BJB	30	9	16.5	5	85	80	GT-NWR10 / NWS10	035226
		2.6	2.0	360465	NW20BJB	40	12	24.5	8	100	149	GT-NWR20 / NWS20	035783

Blade Spring (Replacement Part)

Applicable nipper	NT03	NT05	NT10	NT20	NY03	NY05	NY10	NY15	NY25
	Outer dia. (mm)	3.8	3.8	5.2	5.5	3.6	3.8	3.6	3.6
Free length (mm)	14	14	17	23	10	11	16.5	16.5	17
Code No.	859110	859110	859112	859113	859116	859111	859115	859115	859114

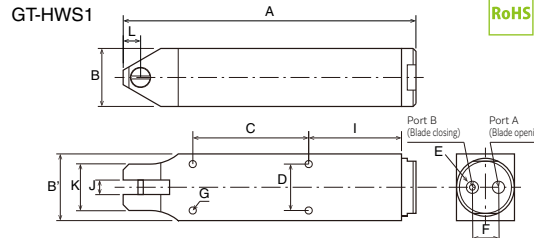
Applicable nipper	N3·N5·NE5	N7·N10·NE10	N10L·N12·N20	N30AS/BBB/ACD	N30AP/PF/AE/AJ	N50
	Outer dia.(mm)	3.5	5.1	5.6	8	8
Free length(mm)	13	18	22.5	24	28	37
Code No.	859100	859101	859102	859103	859104	859105



Double Action Air Scissor (Square Type)

GT-HWS1/ 10

Blade opening and closing is driven by air piston.
Free from troubles due to the spring breakage because there is no spring part in the nipper body and blade.
Blades are OPTION.



RoHS

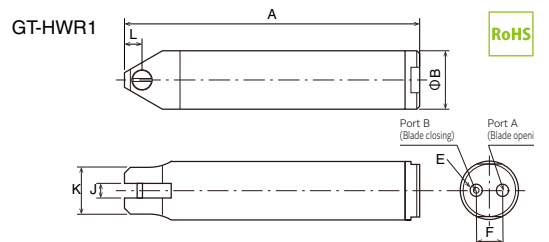
Capacity ϕ (mm)				Code No.	Model No.	Size(mm)											Air Consumption (cm ³ /str.)	Applied Pressure (N)	Weight (g)	Hose I/D (mm)	JAN (4907587)	
Soft Plastic	Hard Plastic	Copper	Steel			A	B	C	D	E	F	G	H	I	J	K						L
		1.0	0.5	360700	GT-HWS1	101	23 x 20	40	16	M5-P0.8	9	M3 Depth4.5	-	32	5	16	6	45	0.4~0.5	116	I/D ϕ 2.5 x O/D ϕ 4	309716
		1.8	1.2	360713	GT-HWS10	154	36 x 36	30	28	PT1/8	16	M4 Depth6	64	69	9	36	8	116	0.4~0.6	356	I/D ϕ 4 x O/D ϕ 6	309747

※The capacity is for reference only when mounting a standard blade. Subject to the blade type and the material of the product to cut.
※Overall length, Weight: Accessories not included.

Double Action Air Scissor (Round Type without Lever)

GT-NWR1/ 10

Blade opening and closing is driven by air piston.
Free from troubles due to the spring breakage because there is no spring part in the nipper body and blade.
Blades are OPTION.



RoHS

Capacity ϕ (mm)				Code No.	Model No.	Size(mm)								Air Consumption (cm ³ /str.)	Applied Pressure (N)	Weight (g)	Hose I/D (mm)	JAN (4907587)
Soft Plastic	Hard Plastic	Copper	Steel			A	B	E	F	J	K	L						
		1.0	0.5	360701	GT-HWR1	101	20	M5-P0.8	9	5	16	6	45	0.4~0.5	84	I/D ϕ 2.5 x O/D ϕ 4	309723	
		1.8	1.2	360714	GT-HWR10	154	36	PT1/4	16	9	23	8	116	0.4~0.6	295	I/D ϕ 4 x O/D ϕ 6	309754	

※The capacity is for reference only when mounting a standard blade. Subject to the blade type and the material of the product to cut.
※Overall length, Weight: Accessories not included.

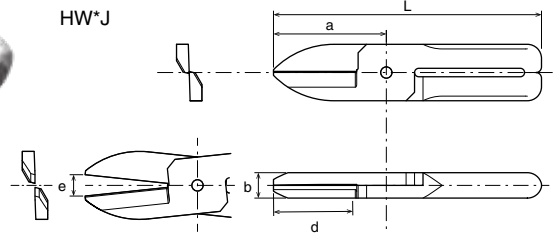
Double Action Scissor Blade

IJ



Scissor type blade for metal
The scissor cutting edges overlap and there is less remain of cutting residue.

RoHS



HWR HWS

Capacity φ(mm)				Code No.	Model No.	Size(mm)					Weight (g)	Applicable Models	JAN (4907587)
Soft Plastic	Hard Plastic	Copper	Steel			a	b	d: Effective Length	e	L			
		1.0	0.5	360452	HW1J	25	5.3	17	3	55	28	GT-HWR1 / HWS1	370013
		1.8	1.2	360462	HW10J	40	9.4	28	5	95	68	GT-HWR10 / HWS10	370020

Air Scissors

- Two types of blades, standard and micro-edge, are available.
- Blades are OPTION.

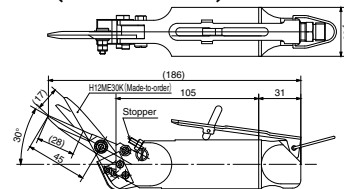
GT-H12K/H120K/H30/HS30

RoHS



GT-H12K Small lightweight type with one fixed blade (Made-to-order)

GT-H12K (Made-to-order)

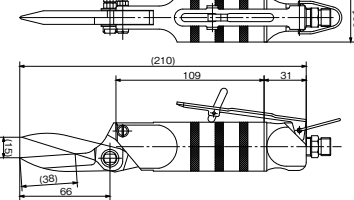


GT-HS30 only



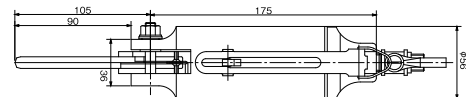
GT-H120K With one fixed blade

GT-H120K



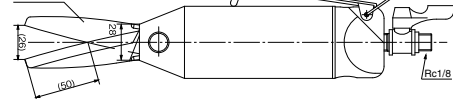
GT-H30 Round-Type Double movable blades

GT-H30



GT-HS30 Square-Type Double movable blades

H30ME



Body only

Code No.	Model No.	Capacity (max) (mm)	Air Consumption (cm ³ /str.)	Applied Pressure (MPa)	Overall Length (with Blade) (mm)	Weight (with Blade) (g)	JAN (4907587)
360211	GT-H30	Kevlar t=1	584	0.3	280	1,030	010490
—	GT-H12K*	Kevlar t=0.3	116	0.2	186.2	290	—
360202	GT-H120K	Band steel 15×0.5t	116	0.5~0.6	211	340	010483
360212	GT-HS30	Kevlar t=1	584	0.3	260	970	010506

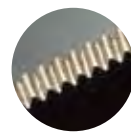
*(made-to-order)

·Hose coupling: R1/4(Nipper Rc1/8) ·Working air hose inner dia.: 5mm
·GT-H30, HS30: Overall length/Weight is with H30ME blade mounted.

Blade (OPTION)

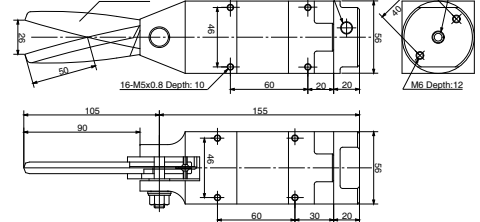
Code No.	Model No.	Applicable Nippers	Blade Shape	Blade Opening (mm)	Effective Cutting Length (mm)	Weight (g)	JAN (4907587)
360311	H30ME	H30,HS30	Scissors type	26	50	280	009982
360312	H30MEL	H30,HS30	Serrated micro edge	34	67	285	009999
360301	H12ME30K*	H12K	Serrated micro edge	17	28	56	—
360302	H120SK	H120K	Scissors type	15	38	115	009975

*(made-to-order)



Serrated micro edge

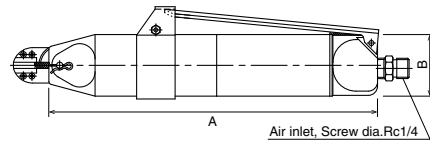
GT-HS30



Air Nipper for Orchid Support Stick

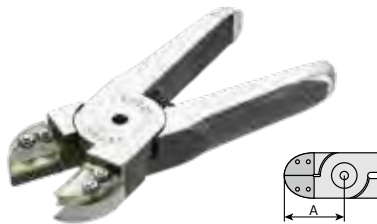
GT-NZ15

- Includes a cutting position stopper to prevent cutting errors.
- Blades are equipped with urethane covers to prevent props from flying off after cutting.



Code No.	Model No.	Capacity		Air Consumption (cm ³ /str.)	Applied Pressure (N)	Air Pressure (MPa)	A (mm)	B (mm)	Weight (g)	JAN (4907587)
		Annealing Wire	Vinyl Stick(Pipe)							
360759	GT-NZ15(NZ15AJ)	#10(Thin)	φ4.2~6	250	1177	0.65	213.5	40	455	030504
360758	GT-NZ15(NZ20AJ)	#8(Thick)	φ4.2~6	250	1177	0.65	213.5	40	465	369888

※High-hardness annealing wire may not be cut.



Blade specifications

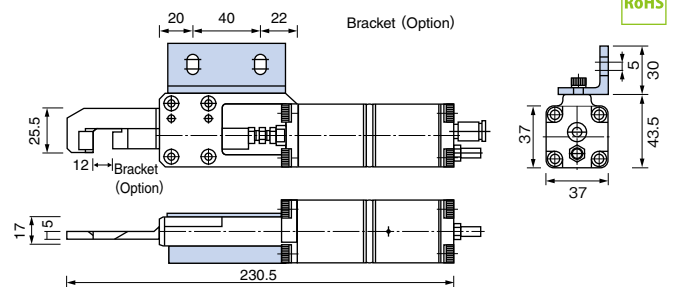
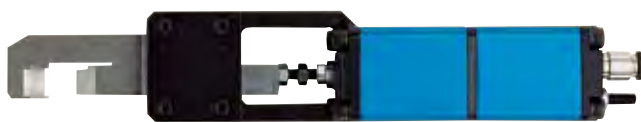
RoHS

Code No.	Model No.	Blade Opening (mm)	Effective Cutting Length (mm)	A (mm)	Weight (g)	JAN (4907587)
360504	NZ15AJ	7.2	15	30	132	370792
360505	NZ20AJ	7.5	15	31	142	370808

Thrust-Cut Air Nipper

GT-NK10

- This nipper can cut film-shaped gates in conjunction with a foot switch or high precision travers machine.
- Can cut from the thin end, preventing wrinkles around the cut edge.



RoHS

Reference

Capacity φ(mm) ABS Plastic	Code No.	Model No.	Air Consumption (cm ³ /str.)	Air Pressure (MPa)	Weight (g)	Applied Pressure (N)	Spec. & Size of the Hose Port	JAN (4907587)
5	360641	GT-NK10(w/NZ15AJ)	110	0.5~0.6	910	735	Hose I.D. φ2.5×O.D. φ4mm	308610

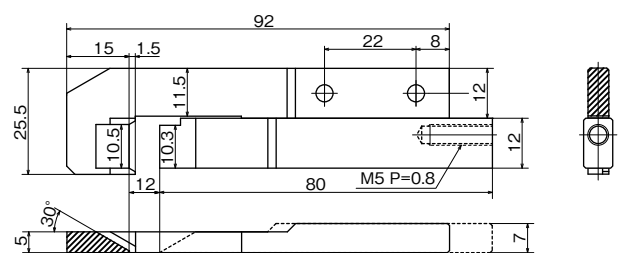
·Hose Coupling: I.D. φ4×O.D. φ6mm ·Piston stroke···Max.12mm

Thrust-Cut Air Nipper blades

NK10AJ

Plastic This is a dedicated set of blades for GT-NK10. Suitable for processing of film gates attached to robot hands.

RoHS



Code No.	Model No.	Size(mm)	Shape	Overall Length (mm)	Weight (g)	Material	Applicable Models	JAN (4907587)
360521	NK10AJ	See Drawing	For plastic (Knife type)	95	96	Special alloy steel	GT-NK10	370136

Air-Hydro Heat Nipper (thrust cut type)

NKH20XL-25/NKH20XR-25

- PTFE-plated blade for excellent durability. The melted workpiece does not tend to adhere to the blade edges.
- HSS tipped (brazing) for increased durability.
- The blade can be easily removed from the cylinder set, making blade replacement easier than with conventional model.
- High power air hydro cylinder with air and oil.
- Suitable for ultra-high precision cutting applications such as optical resin lenses.



· Hydro-converter (option) is required.
 · The change in the blade length and the cylinder (cutting capacity) are available by made-to-order.

Code No.	Model No.	Cutting Capacity width × thickness (mm) Acrylic	Blade Edge Temp. (MAX °C)	Air Consumption (cm ³ /str.)	Piston Stroke (mm)	Weight (g)	JAN (4907587)
360191	NKH20XL-25	10×1.5	180	60	10	690	030702
360192	NKH20XR-25	10×1.5	180	60	10	690	030719

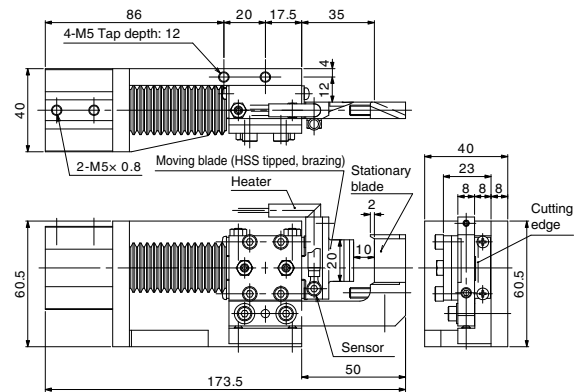
· Working air hose inner dia.: 4mm · Working air pressure: 0.6MPa
 ※ Heater and sensor are not included in the weight.
 ※ Heater for 200VAC, 220VAC, and 240VAC is available by made-to-order.
 ※ Blade length change and cylinder replacement for increased cutting capacity can be designed as made-to-order.
 · Heater (accessory): HTL-28.5-6.25-300L-80W1H (80W/100VAC) Recommended operating temp.: 140°C Cord length: 300mm Weight: 13g
 · Temperature sensor (accessory): SNO-300L-H (K thermocouple) Recommended operating temp.: 140°C Cord length: 300mm Weight: 7g

Blades Specifications

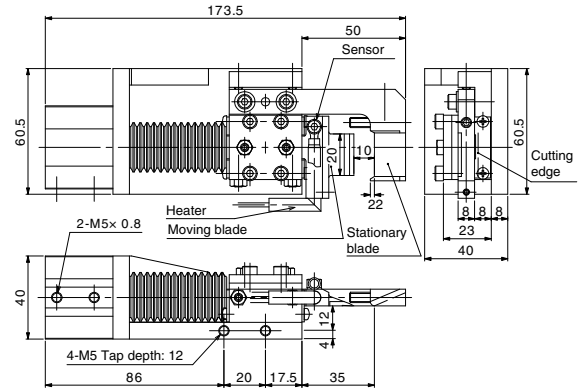
Material	Blade Shape	Blade Opening (mm)	Effective Cutting Length (mm)	Weight (g)
Special alloy steel	Knife type (for plastic)	10	20	125

- Options**
- Hydro-converter (Recommended: KOGANEI AHC 32×50)
 - Working fluid: Petroleum hydraulic fluid or turbine oil with antifoaming agent additive (VG22~100)
 - Temperature controller (DTC-001)

NKH20XL-25



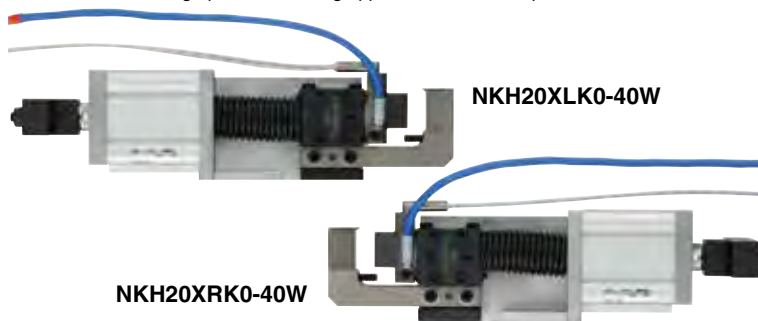
NKH20XR-25



Air Heat Nippers (Thrust Cut Type: w/KINECHECK)

NKH20XLKO-40W/NKH20XRKO-40W

- No hydro-converter or controller is used, so it can be used simply by connecting an air hose. No oil adheres to the workpiece.
- Cutting speed limit can be adjusted with the dial on KINECHECK.
- PTFE-plated blade for excellent durability and the melted workpiece does not tend to adhere to the blade edges.
- HSS tipped (brazing) for increased durability.
- The blade can be easily removed from the cylinder set, making blade replacement easier than with conventional model.
- Suitable for ultra-high precision cutting applications such as optical resin lenses.



· The change in the blade length, the cylinder (cutting capacity), and the position of KINECHECK is available by made-to-order.

Code No.	Model No.	Cutting Capacity width × thickness (mm) Acrylic	Blade Edge Temp. (MAX °C)	Air Consumption (cm ³ /str.)	Piston Stroke (mm)	Weight (g)	JAN (4907587)
—	NKH20XLKO-40W	10×1.5	180	60	10	690	—
—	NKH20XRKO-40W	10×1.5	180	60	10	690	—

· Working air hose inner dia.: 4mm · Working air pressure: 0.6MPa ※ Heater and sensor are not included in the weight.
 ※ Heater for 200V, 220V, and 240V is available by made-to-order.
 ※ The model with the KINECHECK position changed by 180° is available as made-to-order. (Model No.: NKH20XLKO-40W/NKH20XRKO-40W)
 ※ Heater (accessory): HTL-28.5-6.25-300L-80W1H (80W/100V) Recommended operating temp.: 140°C Cord length: 300mm Weight: 13g
 · Temperature sensor (accessory): SNO-300L-H (K thermocouple) Recommended operating temp.: 140°C Cord length: 300mm Weight: 7g

Blades Specifications

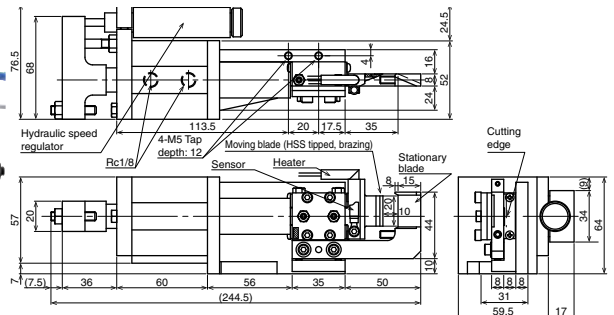
Material	Blade Shape	Blade Opening (mm)	Effective Cutting Length (mm)	Weight (g)
Special alloy steel	Knife type (for plastic)	10	20	125

- Option**
- Temperature controller (DTC-001)

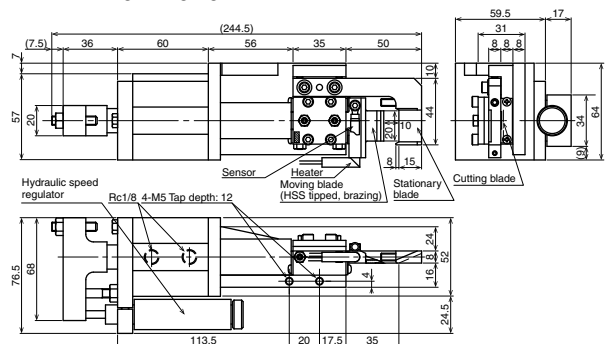


※ Photo: K6 Type (made-to-order)

NKH20XLKO-40W



NKH20XRKO-40W



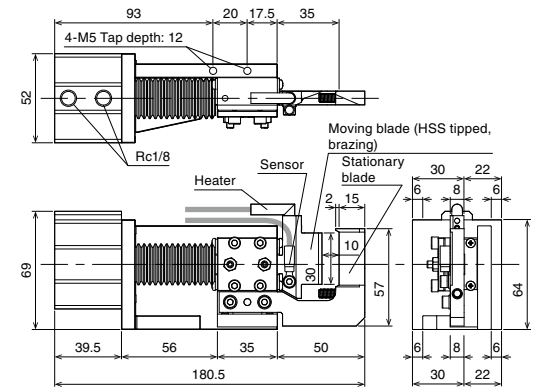
Air Hydro Heat Nippers(Thrust Cut Type)

NKH30XL-40/NKH30XR-40

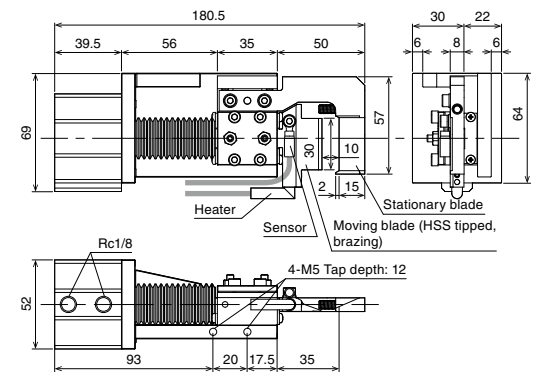
- PTFE-plated blade for excellent durability and the melted workpiece does not tend to adhere to the blade edges.
- HSS tipped(brazing)for increased durability.
- The blade can be easily removed from the cylinder set, making blade replacement easier than with conventional model.
- High power air hydro cylinder with air and oil.
- Suitable for ultra-high precision cutting applications such as optical resin lenses.



NKH30XL-40



NKH30XR-40



Code No.	Model No.	Cutting Capacity width × thickness (mm) Acrylic	Blade Edge Temp. (MAX °C)	Air Consumption (cm ³ /str.)	Piston Stroke (mm)	Weight (g)	JAN (4907587)
360193	NKH30XL-40	16×1.5	180	139	10	865	030726
360194	NKH30XR-40						030733

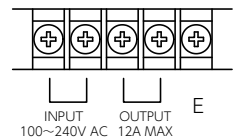
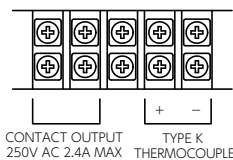
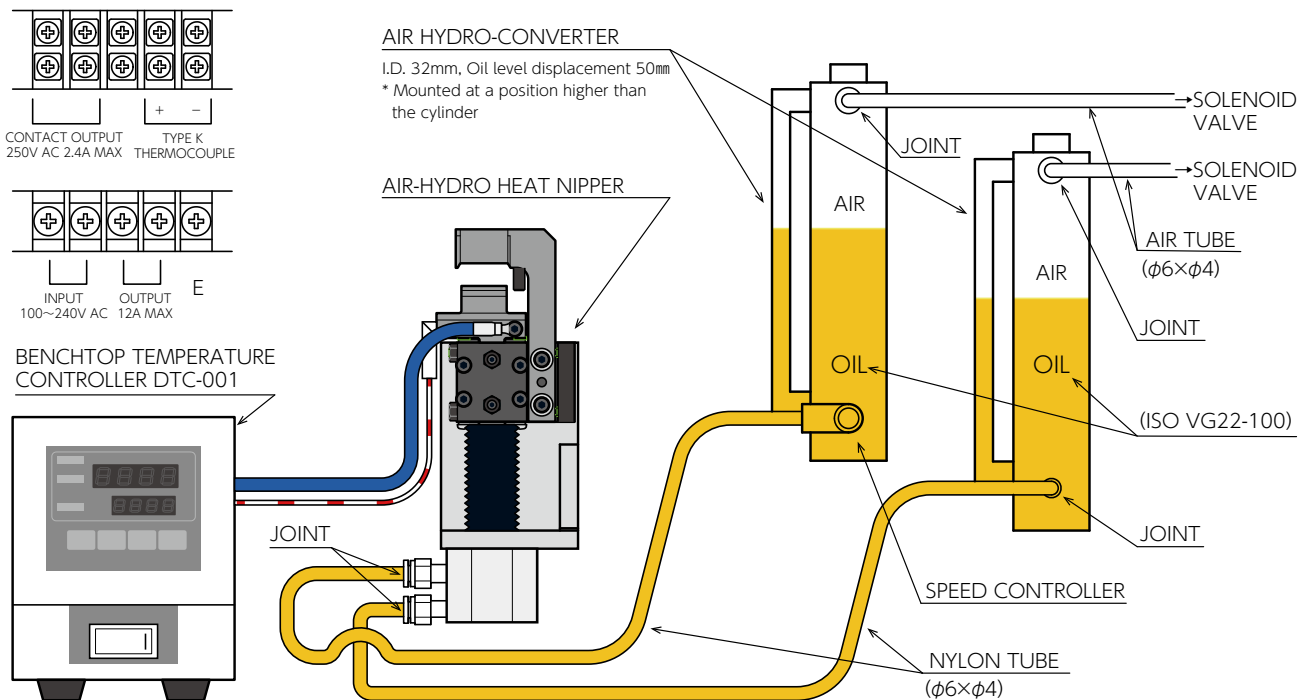
· Working air hose inner dia.: 4mm. Working air pressure: 0.6MPa ※Heater and sensor are not included in the weight.
 ※Heater for 200V, 220V, and 240V is available by made-to-order.
 ※Blade length change, cylinder replacement for increased cutting capacity, and the model with KINECHECK that does not require a hydro converter (oil) can be designed as made-to-order.
 ·Heater (accessory): HTL-34.5-6.25-300L-80W/100V Recommended operating temp.: 140°C Cord length: 300mm Weight: 13g
 ·Temperature sensor (accessory): SNO-300L-H (K thermocouple) Cord length: 300mm Weight: 7g

Blades Specifications

Material	Blade Shape	Blade Opening (mm)	Effective Cutting Length (mm)	Weight (g)
Special alloy steel	Knife type (resin)	10	30	157

- Options**
- Hydro-converter (Recommended: KOGANEI AHC 50 x 50)
 - Operating oil: Petroleum-based hydraulic oil or turbine oil with antifoaming agent added (VG22~100)
 - Temperature Controller (DTC-001)

PIPING CONNECTION



BENCHTOP TEMPERATURE CONTROLLER DTC-001

AIR HYDRO-CONVERTER

I.D. 32mm, Oil level displacement 50mm
 * Mounted at a position higher than the cylinder

AIR-HYDRO HEAT NIPPER

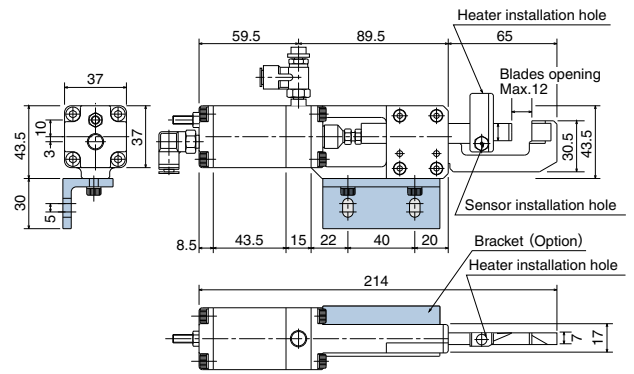
SOLENOID VALVE
 SOLENOID VALVE
 AIR TUBE (φ6×φ4)
 JOINT
 (ISO VG22-100)
 JOINT
 SPEED CONTROLLER
 NYLON TUBE (φ6×φ4)

Heat Air Nipper (Thrust Cut Type)

GT-NKH10



- The cutting surface can be changed by adjusting the cutting speed by a speed controller and the heater temperature.



Code No.	Model No.	Cutting Capacity width × thickness (mm) Acrylic	Blade Edge Temp. (MAX. °C)	Air Consumption (cm ³ /str.)	Piston Stroke (mm)	Weight (g)	JAN (4907587)
360643 360644	GT-NKH10	7×1.5	200	73	12	715	309655(w/NKH10AJ) 309662(w/NKH10RAJ)

·Working air hose inner dia.: 4mm ·Working air pressure: 0.5~0.6MPa
 ·Heater (accessory): 80W/120V, cord length 300mm
 ·Temperature sensor (accessory): K thermocouple ·Cord length: 300mm

Blades Specifications

Code No.	Model No.	Material	Blade Shape	Blade Opening (mm)	Effective Cutting Length (mm)	Weight (g)	JAN (4907587)
360548 360549	NKH10AJ NKH10RAJ	Special alloy steel	Knife type (for plastic)	12	10	137	370327 370334

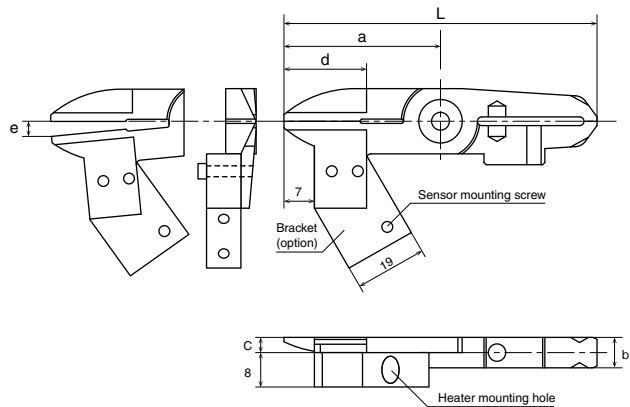
Option · Temperature controller(DTC-001)

Heat Air Nipper

GT-NTH05AJ/NTH10AJ



- One cutting side of the blade is fixed, making the gate alignment easy. Furthermore, the sliding function of the nipper allows the blade to be pressed firmly against the workpiece.



·Use in combination with the Sliding Air Nipper Vertical Type (GT-NT05/10 type).
 ·For the dimensions of the main unit, please refer to "Sliding Air Nipper Vertical Type" on P4.

Code No.	Model No.	Cutting Capacity φ (mm) Acrylic	Set Temperature (MAX. °C)	Air Consumption (cm ³ /str.)	Weight (g)	Blade	JAN (4907587)
360635	GT-NTH05	2.5	200	47	436	w/NTH05AJ	309839
360636	GT-NTH10	3.5	200	82	666	w/NTH10AJ	309846

·Working air hose inner dia.:2.5mm ·Working air pressure: 0.4~0.5MPa
 Accessories
 ·Heater: 80W/120V, cord length 300mm
 ·Temperature sensor: K thermocouple, cord length 300mm
 ·Speed controller, and Bracket for heater installation

Blades Specifications

Code No.	Model No.	Size(mm)						Weight (g)	Material	Applicable Models	JAN (4907587)
		a	b	c	d: Effective Length	e	L				
360546	NTH05AJ	36	7	3.5	15	3.5	72	40	Special alloy steel	GT-NT05(-4) / NT05R(-4)	370303
360547	NTH10AJ	47	9	4.7	17	4.5	94	88	Special alloy steel	GT-NT10(-6) / NT10R(-6)	370310

※The following items are not included in the weight of blade: heater, sensor, and bracket.

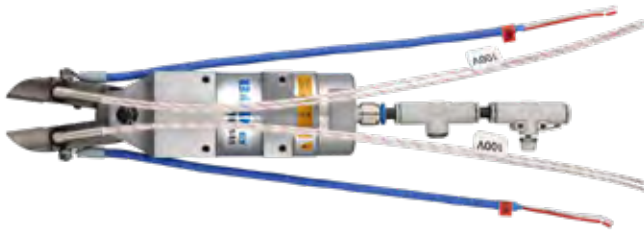
Option · Temperature controller (DTC-001)

Heat Air Nipper(Square Type) with Blade

GT-NSH20B-S/NSH30B-S

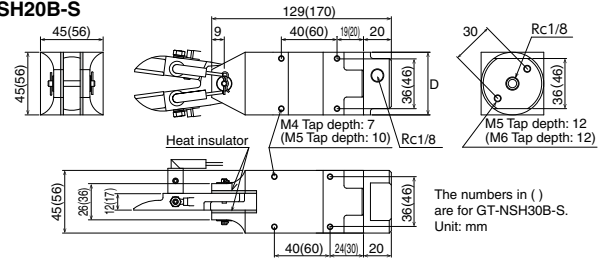
- PTFE-plated blade for excellent durability and the melted workpiece does not tend to adhere to the blade edges.
- Suitable for rough cutting of direct gates.
- The change in the length and shape of the blade is supported by made-to-order.

RoHS



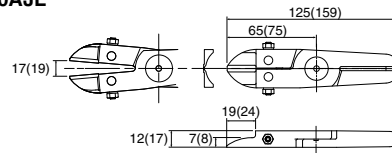
Blade(included)

GT-NSH20B-S



The numbers in () are for GT-NSH30B-S. Unit: mm

NH20AJL



The numbers in () are for NH30AJL. Unit: mm

Code No.	Model No.	Capacity(mm)		Blade Edge Temp. (MAX. °C)	Air Consumption (cm ³ /str.)	Weight (g)	JAN (4907587)
		Soft Plastic	Hard Plastic				
360097	GT-NSH20B-S (w/NH20AJL)	φ6	φ4	150	230	689	027689(w/NH20AJL)
360098	GT-NSH30B-S (w/NH30AJL)	φ6	φ5	150	584	1,196	027696(w/NH30AJL)

·Working air hose inner dia.: 5mm

·Working air pressure: 0.5~0.6MPa

※The weight of dedicated blade, dedicated heater, and sensor is included.

※Heater for 200V, 220V, and 240V is available by made-to-order.

·Accessories

Heater: HTL-28.5-6.25-1000L-80W1H(80W/100V) 2 pcs, Recommended operating temp. 140°C

Temperature sensor: SNO-1000L-H(K thermocouple) 2 pcs. Recommended operating temp. 140°C

Speed Controller Meter-in AS2002F-06

Speed Exhaust Controller AQ340F-06-00

Blades Specifications

Code No.	Model No.	Material	Blade Shape	Blade Opening (mm)	Applicable Models	Weight (g)	JAN (4907587)
360189	NH20AJL	Special alloy steel	Straight Long (Plastic)	17	GT-NSH20B-S	199	015167
360190	NH30AJL			19	GT-NSH30B-S	408	015266

※The dedicated heater, temperature sensor, and collar (for heater installation) are not included. They are option and ordered separately.

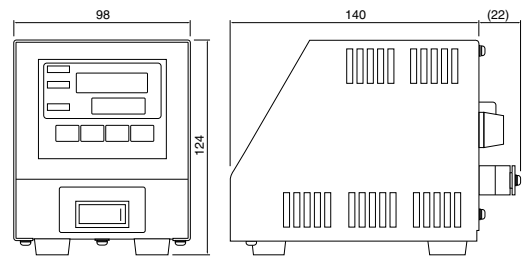
Option · Temperature controller (DTC-001)

Benchtop Temperature Controller

DTC-001

- Heater can be connected directly to the main unit, which helps labor-saving when wiring.
- The compact size makes it portable, so the installation location can be changed at any time.

RoHS



Please inform us of the Model No. of the heat nipper when ordering.

Code No.	Model No.	Temperature Range Thermocouple K (°C)	Power Supply (VAC)	Power Consumption (with 100 VAC input)	Operating Ambient Temperature/Humidity (°C)/(%)	Protection Fuse	Weight (g)	JAN (4907587)
360280	DTC-001	0~200	100~240	Approx. 3W (Approx. 5VA)(With no load)	0~40 / RH35~85(No condensing)	15A	900	030764

※The power supply voltage is output directly to the heater, so please check the voltage specifications of your heater.

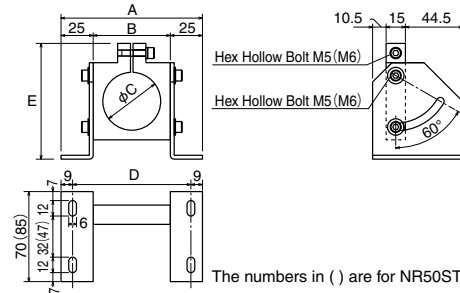
Options · Power cord : Part No. DTC-001-□-□

- 1 : Cord from terminal block required(2m for sensor)
- 2 : Cord from terminal block required(2m for heater)
- 3 : Cord from terminal block required(2m for heater and sensor)
- : (Blank)No cord
- Ⓐ : Japan power plug(2m)
- Ⓒ : Europe power plug(2m)
- : (Blank)No plug

Stand for GT-NR

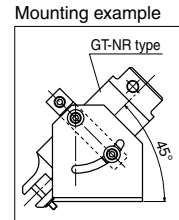
NR10LST/20ST/30ST/50ST

- Fixture for direct gate sprue cutting and for mounting to automatic machine.
- Mounting angle can be adjusted (0 to 60°).



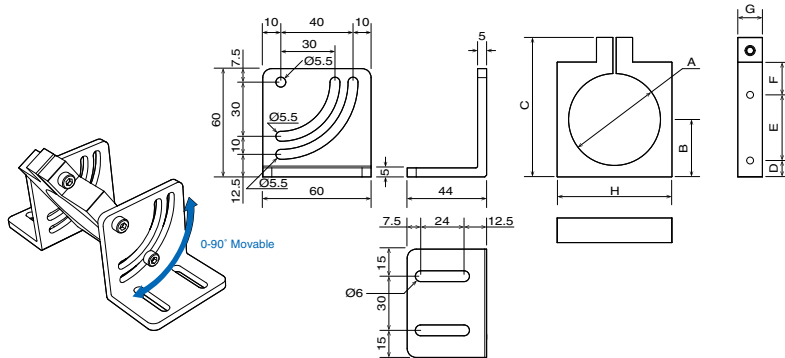
RoHS

Code No.	Model No.	Size(mm)					Applicable Models	Weight (g)	JAN (4907587)
		A	B	C	D	E			
360057	NR10LST	102	52	36	84	82	NR10L	335	308924
360058	NR20ST	110	60	45	92	90	NR20	385	308931
360059	NR30ST	130	80	56	112	110	NR30	535	308641
852436	NR50ST	150	100	75	132	130	NR50, NR50F	861	014597



Stand for the GT-NR30

NR30ST-M

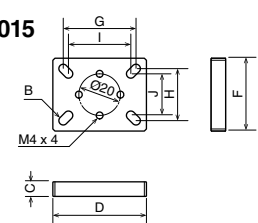
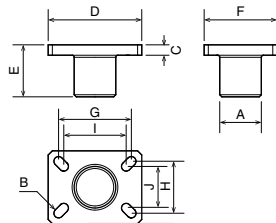


RoHS

Code No.	Model No.	Size(mm)								Weight (g)	JAN (4907587)
		A	B	C	D	E	F	G	H		
360048	NR30ST-M	56	35	85	10	40	20	15	70	255	—

Mounting/Flat Bracket for the GT-NY10/15

VBRNY1015/VFLBNY1015

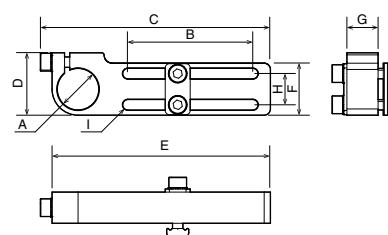


RoHS

Code No.	Model No.	Size(mm)										Applicable Models	Weight (g)	JAN (4907587)
		A	B	C	D	E	F	G	H	I	J			
360063	VBRNY1015	φ20	φ4.5	5	45	25	35	35	25	30	20	GT-NY10/15	38	—
360065	VFLBNY1015	-	φ4.5	7	45	-	35	35	25	30	20	GT-NY10/15	25	—

Slide Base

VS2060



RoHS



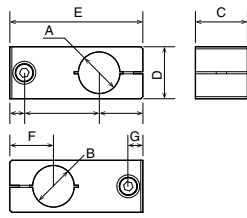
Code No.	Model No.	Size(mm)									Weight (g)	JAN (4907587)
		A	B	C	D	E	F	G	H	I		
360047	VS2060	φ20	60	110.6	30	105	25	15	15	φ5.2	111	—

Cross Connector

VCC2020



RoHS



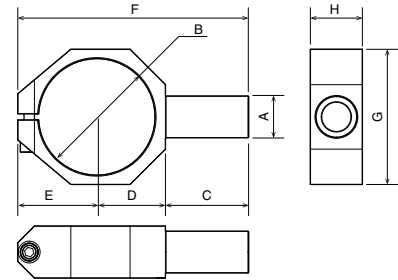
Code No.	Model No.	Size(mm)							Weight (g)	JAN (4907587)
		A	B	C	D	E	F	G		
360050	VCC2020	φ20	φ20	25	25	64	21	65	68	—

Bracket for the GT-NR20/30

VBNR20/30



RoHS



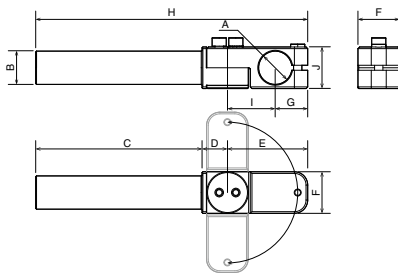
Code No.	Model No.	Size(mm)								Applicable models	Weight (g)	JAN (4907587)
		A	B	C	D	E	F	G	H			
360060	VBNR20	φ20	φ45	35	28	31.5	94.5	53	20	GT-NR20	65	—
360061	VBNR30	φ20	φ56	40	33	38	111	65	25	GT-NR30	110	—

Elbow Arm

VEA20100



RoHS



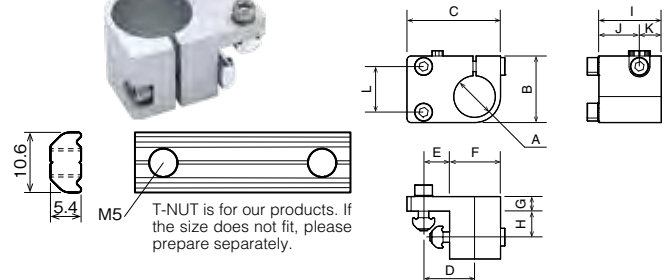
Code No.	Model No.	Size(mm)										Weight (g)	JAN (4907587)
		A	B	C	D	E	F	G	H	I	J		
360062	VEA20100	φ20	φ20	100	15.3	48.2	25	19.5	163.5	28.7	25	115	—

Mounting Bracket

VMB20125



RoHS

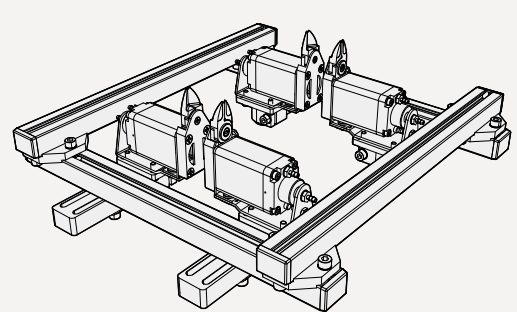
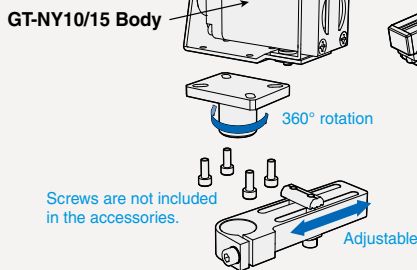
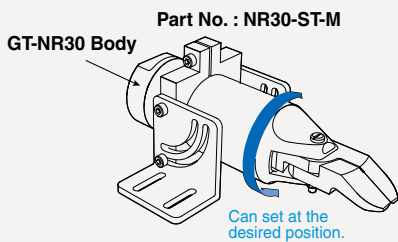


Code No.	Model No.	Size(mm)											Weight (g)	JAN (4907587)	
		A	B	C	D	E	F	G	H	I	J	K			L
360049	VMB20125	φ20	32	45	24.5	12.5	24.5	7	12.5	30	19.5	10.5	22	70	—

ONE POINT

VBRNY1015 | VSB2060

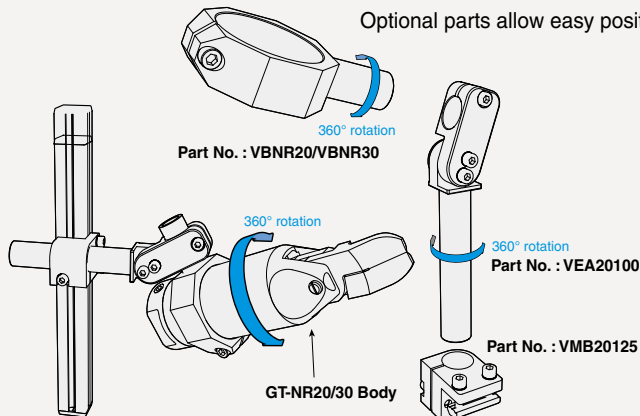
Optional parts allow easy positioning of air nippers.



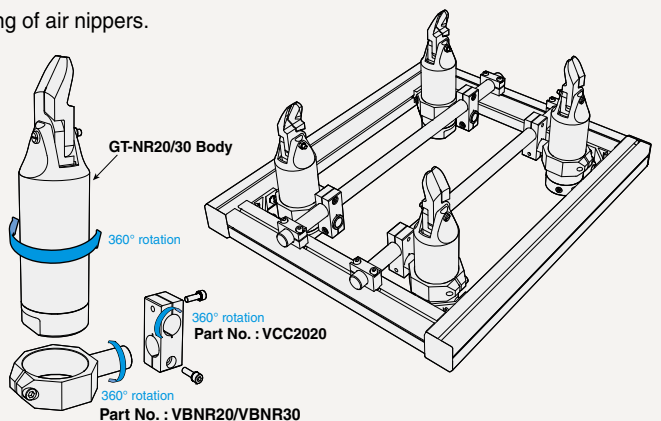
Example of use

VCC2020 | VBNR20/30 | VEA20100 | VMB20125

Optional parts allow easy positioning of air nippers.



Example of use

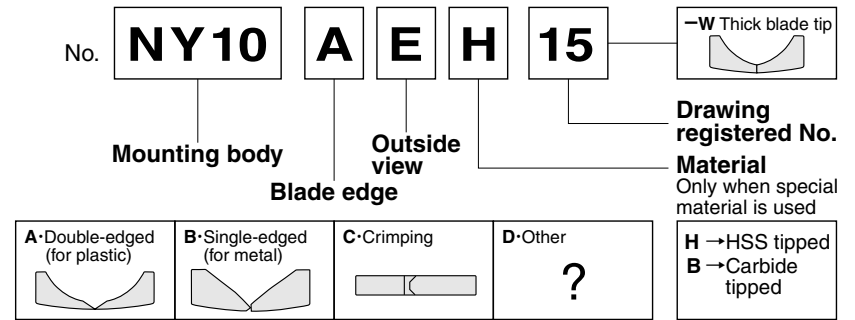


Example of use

We design your custom-made blades, even from 1 piece!

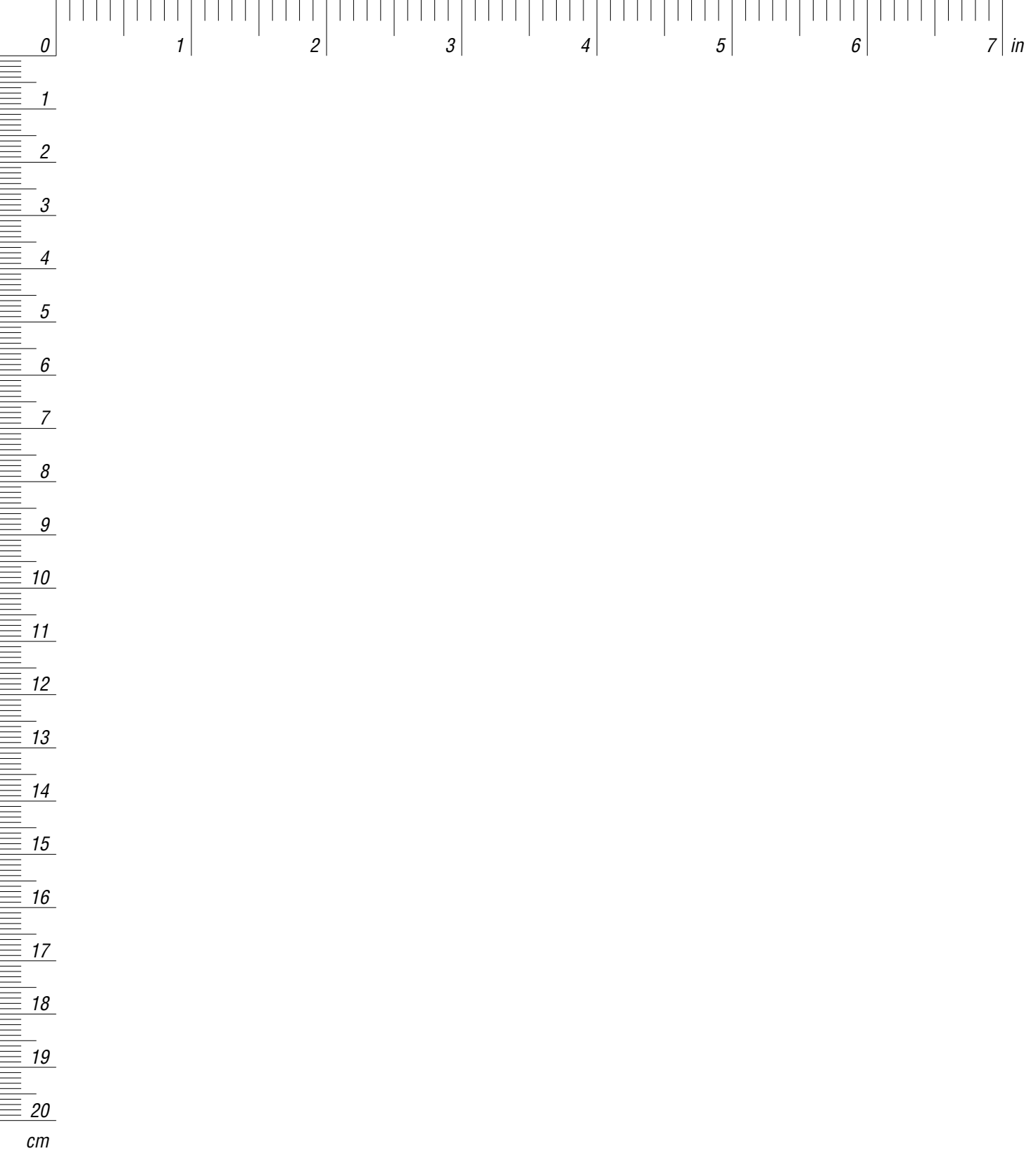
VESSEL provides solutions of customized blades for a wide variety of applications. Custom-made blades are designed flexibly according to a wide range of demands and offered at the minimum cost and lead-time. See the examples below. We accept orders for small quantity as well.

Ref: What the model code stands for



Blade Types

<p>A Angled</p>	<p>B Angled</p>	<p>C Crimping</p>	<p>D Ride gate</p>
<p>E Nipping</p>	<p>F Powerful cutting</p>	<p>G Punching</p>	<p>H Crank</p>
<p>I Plier type</p>	<p>J(JL) Straight, Straight long</p> <p>For cases that the nipper cannot reach the gate with a normal blade because the product is long.</p>	<p>K Nipping, L-shaped</p>	<p>L L-shaped</p>
<p>M/XL/XR Side opening</p>	<p>TN Tube</p>	<p>VO Nail pulling</p>	<p>DI Bending</p>
<p>VHA Scissors</p>	<p>Cutting Film gate stranded wires</p>	<p>Direct gate A sprue that is directly gated.</p>	<p>AHE Crank, nipping</p> <p>For processing small gates that are automatically cut during mold release, etc.</p>
<p>AHW Double blades</p>	<p>NH Heat nipper</p>		



VESSEL Co., Inc.

17-25, Fukae-Kita 2-chome, Higashinari-ku, Osaka 537-0001 JAPAN
Tel:+ 81 (0)6 6976 7778 Fax:+ 81 (0)6 6972 9441
E-mail:export@vessel.co.jp URL : www.vessel.co.jp/english/

VESSEL EUROPE

contact@vessel-europe.com
www.vessel-europe.com

